



## **DPTE® Beta Containers** **Stainless Steel**

Re-usable Canisters for Safe Bi-directional  
Transfer with Optional Racks

# DPTE® Beta Containers Stainless Steel

A reliable leaktight  
sterile transfer solution

Getinge's stainless steel DPTE® Beta Containers allow for efficient loading and unloading of components and equipment into a sterile zone.



**They provide security** during autoclaving and when transporting items from one containment area to another. The canisters are compatible with any DPTE Alpha port of the same diameter. Safety interlocks prevent manipulation errors.

The reusable stainless steel containers are engineered for steam sterilization processes. The good mechanical resistance allows safe transfer of heavy and complex parts.

- Integrated hydrophobic sterile filter allows steam to enter the container and maintains sterile conditions after the sterilization process.
- Can be sterilized by autoclaving or H<sub>2</sub>O<sub>2</sub>



**Stainless steel container for transfer of liquid drug products** from tank to filling line, simplifies cleaning by SIP (Sterilize In Place) of the entire assembly.

# A modular design to fit your specific needs

## Level 1

### Standard containers

- Standard lengths
- Container body 1 mm thick
- Handles: attached to flange
- Autoclavable (perforated bottom, filter connection, protective housing)
- Option: glide system rack



## Level 2

### Semi-standard containers

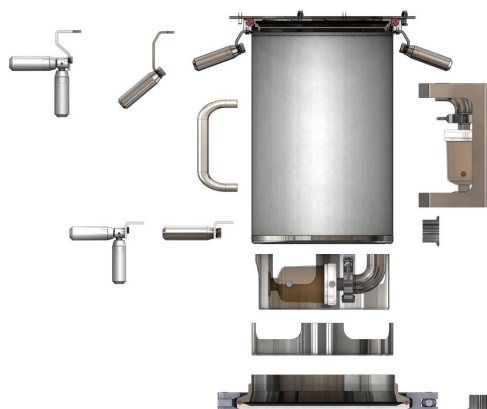
- Pre-defined lengths
- Container body 1 mm thick
- Handles: selection available, attached to flange
- Autoclavable or H<sub>2</sub>O<sub>2</sub> sterilizable (H<sub>2</sub>O<sub>2</sub> non-perforated bottom, protective housing)
- Option: racks



## Level 3

### Configurable containers using pre-designed parts

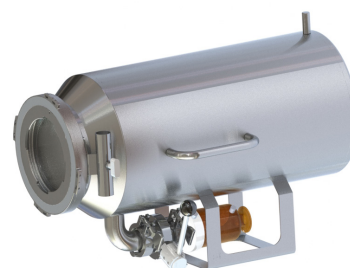
- Pre-defined lengths
- Container body 2 mm thick
- Handles: selection available, may be attached anywhere on the container
- Autoclavable or H<sub>2</sub>O<sub>2</sub> sterilizable
- Option: dismountable bottom
- Option: additional clamp, may be attached to side and/or bottom
- Option: racks



## Level 4

### Customized containers

- Racks, dimensions, parts and finishing to customers' requirements

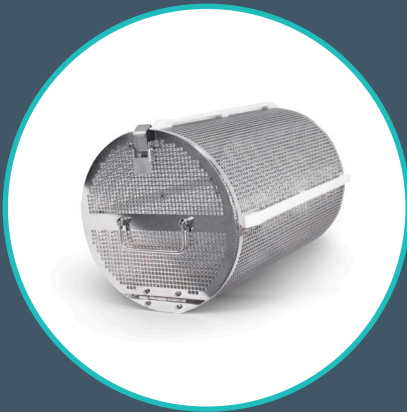


Check compatibility on page 6.  
Please contact our Sales Team if you need support.  
[info@getinge.com](mailto:info@getinge.com)

# Racks for Stainless Steel Containers

Safely load, sterilize and unload your equipment and components

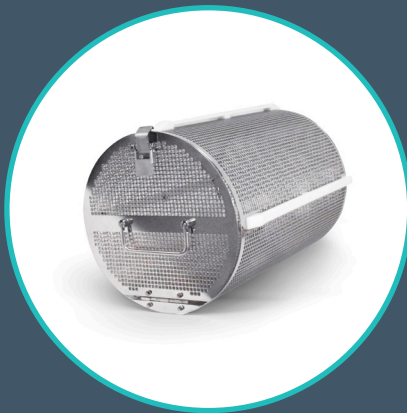
## Level 1



### Glide System

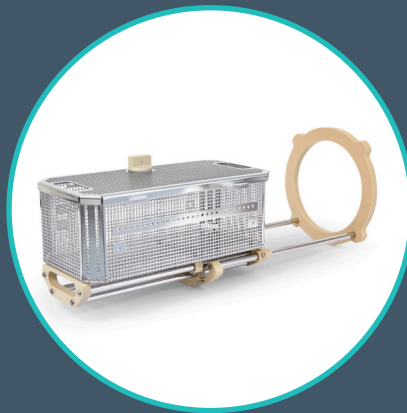
The only rack available for all levels of container. This rounded basket can handle stoppers, caps, etc. The basket can be pulled out of the container to move the parts directly into the hopper of the filling line.

## Level 2



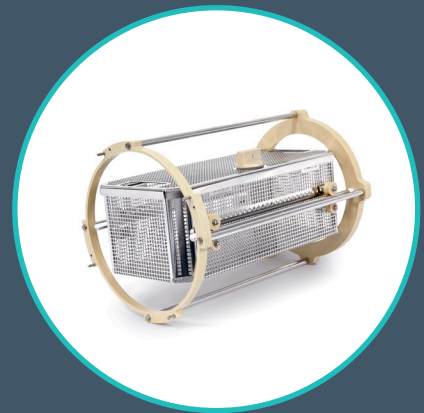
### Type A: Glide System

This rounded basket can handle stoppers and caps, etc. The basket can be pulled out of the container to move the parts directly into the hopper of the filling line.



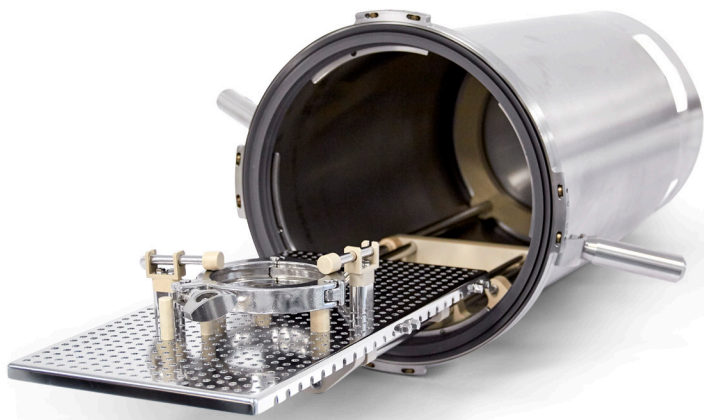
### Type B: Telescopic System

The basket can be pulled out of the container but remains attached to it. The operator has access to the full rack space.



### Type C: Roller System

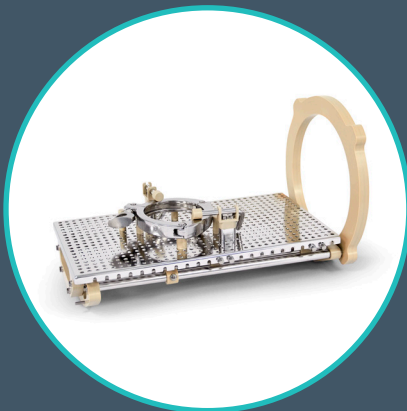
The basket slides on a rail and can be separated from the container. The operator can easily use it outside the container.



**The optional racks provide you with a solution for efficient and ergonomic loading and unloading of components, tools etc.**

Items are held securely in place inside the container, enabling complete access by steam during autoclaving, leaving no hidden zones so that steam and air can circulate efficiently.

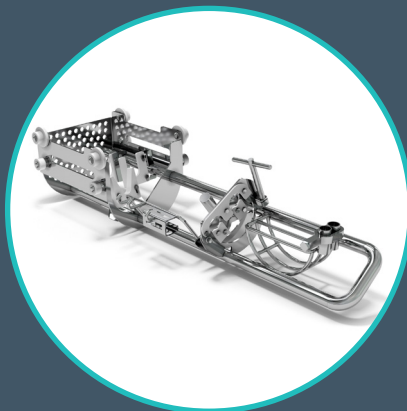
### Level 3



#### Configurable Rack

A perforated plate adapted to the length and diameter of the container, the configurable rack can handle variably sized components using repositionable spacers and pins. This rack provides a useful solution adaptable to an almost infinite variety of items of equipment.

### Level 4



#### Customized Rack

The example shown was designed for a complete tool set including funnel, scissors, spouts etc. Other potential loads include machine parts, small tools for environmental monitoring, needles and petri plates.



Check compatibility on page 6.  
Please contact our Sales Team if you need support.  
[info@getinge.com](mailto:info@getinge.com)

# Containers & Racks Compatibility

## DPTE® Beta Containers Stainless Steel







### Lengths and diameters available

Level	Ø	Length 300 mm	Length 400 mm	Length 500 mm	Length 600 mm	Length 700 mm
1 Standard*	190	-	•	-	-	-
	270	-	•	-	-	-
	350	-	-	•	-	-
2 Semi-standard	190	•	•	•	•	•
	270	•	•	•	•	•
	350	•	•	•	•	•
3 Configurable using pre-designed parts	190	•	•	•	•	•
	270	•	•	•	•	•
	350	•	•	•	•	•
4	Customized containers and racks, dimensions, parts and finishing to customers' requirements — contact our Sales Team.					

\* Ø 105 and Ø 460 are part of our range, please contact our Sales Team.

### Containers and Racks compatibility

The rack design will match the diameter and length of the chosen container.

		Containers			
		1-Standard 	2-Semi-Standard 	3-Configurable 	4-Customized 
Racks	Glide system 	✓	✓	✓	✓
	Telescopic system 	✗	✓	✓	✓
	Roller system 	✗	✓	✓	✓
	Configurable rack 	✗	✓	✓	✓
	Customized rack 	✗	✓	✓	✓



# DPTE® System Accessories

## DPTE Transfer Trolley

The hygienically designed compact loading trolley safeguards production efficiency and the integrity of the product inside the DPTE® aseptic transfer system. Variable height and memorization of positions for DPTE access improve ergonomics and safety.



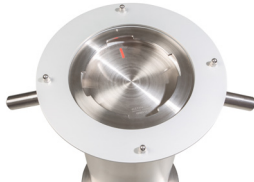
## DPTE Transfer Leak Tester TLT

Check the integrity of your Beta container before and after use, with Getinge's wireless, pipeless leak tester. The equipment provides full traceability under FDA 21 CFR Part 11.



## Gasket Protection Cover

Protect the gasket of your stainless steel container during autoclaving, storage and transportation with the metal cover that is simple to apply and remove.



## Container Key

The key accessory enables you to open and close DPTE Beta containers easily and safely.



## Re-usable PE Beta containers are also available

Please contact our Sales Team.



# Washing & Sterilization

Getinge recommends using the GEW 101210 Washer/Dryer and the GSS P Steam Sterilizer for the washing and sterilization of a DPTE Stainless Steel Container.



Getinge GEW 101210 Biotech/  
Laboratory Washer-Dryer



GSS P Steam Sterilizer for  
pharmaceutical production



Getinge is a registered trademark of Getinge AB, its subsidiaries, or affiliates in the United States or other countries • Copyright 2020 Getinge AB or its subsidiaries or affiliates • All rights reserved

**Manufacturer** • Getinge Infection Control AB • P. O. Box 69 • SE-305 05 Getinge • Sweden • Phone: +46 (0) 10 335 00 00

**Sales Office** • Getinge US Sales, LLC • 1 Geoffrey Way • Wayne, NJ 07470 • United States

**[www.getinge.com](http://www.getinge.com)**