



Workflow Offering

Product catalogue

This document is intended to provide information to an international audience outside of the US.

GETINGE 




Equipment for the seamless workflow of sterile goods

To secure best routines for infection control, high efficiency and an ergonomic workplace, the entire circulation of sterile goods must be considered. That's why Getinge offers not only washer-disinfectors and sterilizers, but complete processing systems with thought-through loading equipment and accessories that might be needed.

Our accessories for pre-cleaning, inspection, packing, storage and distribution provides an efficient and seamless flow of sterile goods, where everything fits together with coherent design and functionality.

Our products are suited for many different applications, such as CSSD's, small clinics and practices, dental clinics, laboratories etc. You will find more about what accessories fit what applications on the next couple of pages, as well as a register at the back that lists all our available accessories.

 = Washable

1

Instrument reprocessing:
Soiled zone

2

Instrument reprocessing:
Clean zone

3

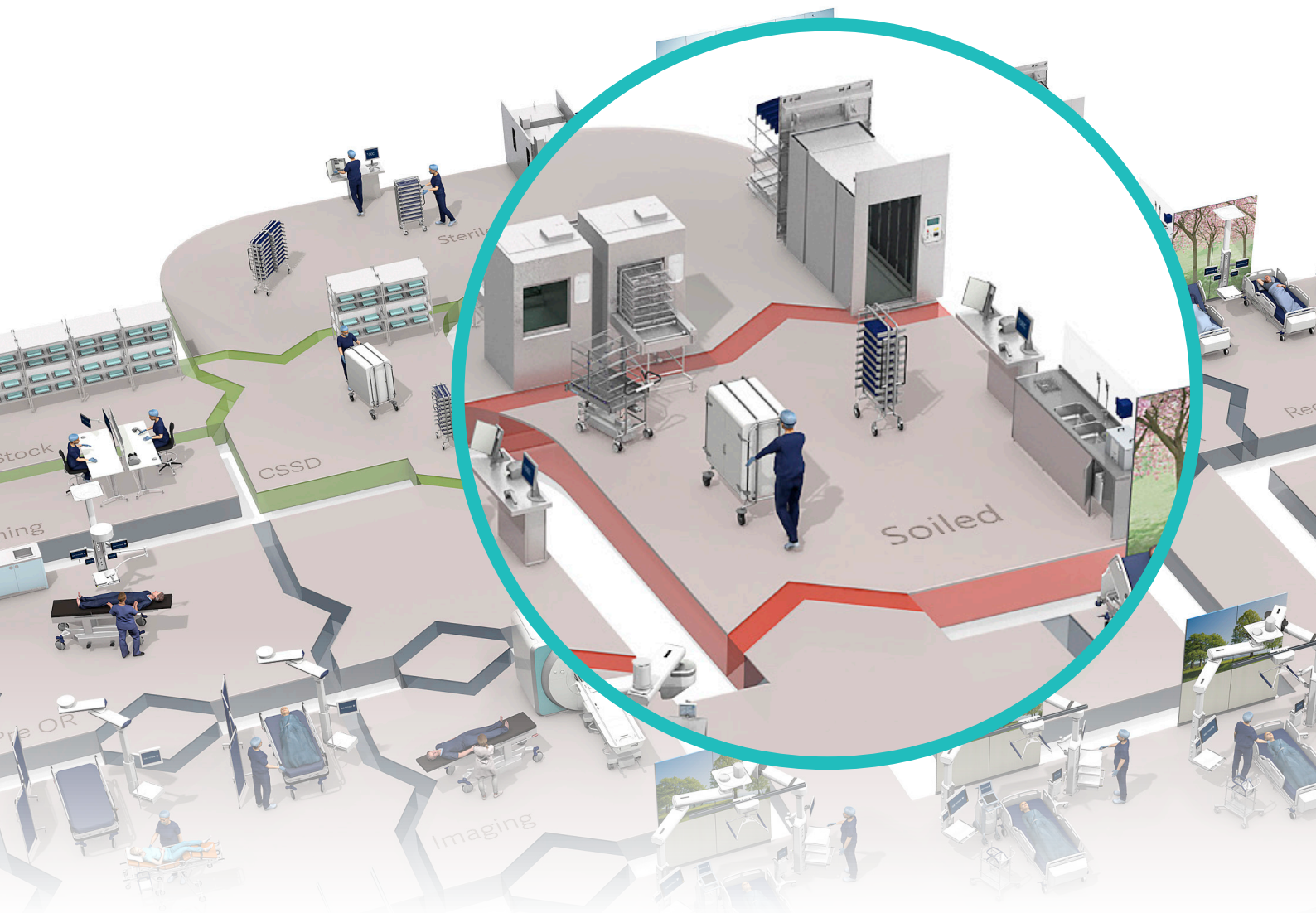
Instrument reprocessing:
Sterile zone

4

Trays & baskets

5

Media



Instrument reprocessing: Soiled zone

Getinge's designs are based on the barrier principle, ensuring clear separation of soiled, clean and sterile zones. The zones are separated by pass-through washer-disinfectors and sterilizers. The following pages will describe what accessories we offer for each of the zones, starting with the soiled zone.

Unclean items from the operating theaters, wards, outpatient and other departments arrive at the reception area – for soiled goods by covered trolleys or by lift – in the same instrument trays, baskets and containers as they were delivered in. After visual inspection, items are either put straight on racks and loaded into the pass-through washer-disinfectors or manually cleaned by soaking, spray-gun rinse and/or ultrasonic cleaning, and then put into the washer-disinfectors.

Getinge Elmasonic Med Ultrasonic Cleaners

Modern design with easy-to-clean stainless steel surfaces and wipeable keypad/display.



The range of Getinge Elmasonic Med Ultrasonic Cleaning units are freestanding bench models with stainless steel tank and are available in six different models, from 6 liters to 90 liters. Ultrasonic cleaning makes it possible to clean intricate parts with little or no disassembly, because ultrasound will clean wherever the cleaning liquid gets in contact with a surface. Including lid.

PRODUCT DESCRIPTION

- 37 kHz ultrasonic frequency (control range -2,5/+5,5 kHz)
- 5 ultrasonic modes for need-based sound field distribution in the ultrasonic bath
 - Eco-mode: Gentle cleaning with quieter operation by running the sweep-mode at a slightly lower intensity
 - Sweep-mode: Even cleaning through even sound field distribution in the ultrasonic bath
 - Pulse-mode: Removal of even stubborn contamination through pulsating sound field distribution
 - Dynamic-mode: Combination of the ultrasonic modes sweep and pulse in order to increase the cleaning performance
 - Degas-mode: Quick degassing of the cleaning liquid and for special applications in the laboratory
- 4 memory locations for cleaning programs, available via quick selection

KEY FEATURES

- Auto start function for temperature-controlled start of cleaning
- Digital control unit with wipeable membrane keyboard and easy-to-read display for displaying all operating states
- 5 ultrasonic modes for need-based sound field distribution in the ultrasonic bath
- Optical and acoustic feedback, e.g. at the end of cleaning or when the limit temperature is reached
- Pre-selection of cleaning time: cleaning time adjustable between 1 minute and 6 hours
- Electronic temperature control adjustable in steps of 5 °C from 25-80 °C (can be switched to °F; temperature tolerance -5/+8 °C)
- Setup menu for individual adjustment of the device functions
- Dry run detection (except for Elmasonic Med 500 and 900)
- Automatic safety shutdown after 8 hours

Baskets

All baskets are stainless steel (W Nr. 1.4301) and with Rilsan-coated handles. The Basket for the Getinge Elmasonic 200 also serves as a holder for sterilization baskets.

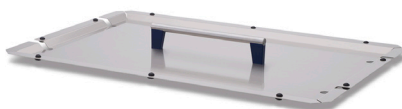
Lids

The Getinge Elmasonic Med 60-300 utilizes a polypropylene lid that also serves upside down as a practical drip tray for basket and cleaned parts. By collecting and returning evaporating water from the ultrasonic bath, energy and costs can be saved. In addition, the plastic covers reduce the noise of ultrasonic cleaning and thus ensure a more pleasant working noise level. Included with the unit. The lids for the Getinge Elmasonic 500 and 900 is made of stainless steel by collecting and returning evaporating water from the ultrasonic bath, energy and costs can be saved. Included with the unit.

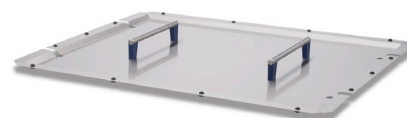
Getinge Elmasonic Lid 60-300



Getinge Elmasonic Lid 500



Getinge Elmasonic Lid 900



Holder for two beakers is made of stainless steel, to be placed on the ultrasonic cleaning device and holds two glasses/beakers.

Holder for two beakers

Incl. two rubber rings

Getinge Elmasonic Med 60-300



Beaker: 600 ml



Beaker: 1,000 ml



Noise protection cover

New for the Getinge Elmasonic we can offer noise protection covers. These covers are available for the device sizes 500 and 900 and are attached to the ultrasonic device. A noise protection cover can reduce the noise of ultrasonic cleaning by up to 54%. At the same time, the cover retains process vapors, saves energy, and costs by reducing waste heat and collecting/recirculating the water vapors.





Getinge Elmasonic Med 60

Ultrasonic cleaning unit with 6-liter bath capacity. The smallest in the Getinge range and suitable for cleaning a few small instruments.

Lid and basket included.



Art. No.	Description
6003001200	Getinge Elmasonic Med 60, 220–240 V / 50–60 Hz
6003001212	Getinge Elmasonic Basket 60

Tank size (W×D×H)	Unit size (W×D×H)	Tank capacity	Weight	Power consumption
275×125×145 mm	370×210×275 mm	4.3 L	5.2 kg	550 W



Getinge Elmasonic Med 180

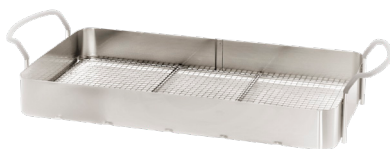
Ultrasonic cleaning unit with 14-liter bath capacity, ideal machine for the cleaning of flexible endoscope accessory. Often used for decentralized cleaning, e.g. outside the CSSD.

Lid and basket included.



Art. No.	Description
6003001201	Getinge Elmasonic Med 180, 220–240 V / 50–60 Hz
6003001213	Getinge Elmasonic Basket 180

Tank size (W×D×H)	Unit size (W×D×H)	Tank capacity	Weight	Power consumption
300×270×195 mm	405×360×330 mm	14.2 L	10.2 kg	1,000 W



Getinge Elmasonic Med 200

Ultrasonic cleaning unit with 18-liter bath capacity. Specifically designed and suitable for the cleaning of DIN-medicine baskets.

Two different fill level (tank base to fill level marking)

- 85 mm for low DIN instrument trays
- 120 mm for 100 mm instrument trays

Lid and basket included.

Art. No.	Description
6003001202	Getinge Elmasonic Med 200, 220–240 V / 50–60 Hz
6003001214	Getinge Elmasonic Basket 200

Tank size (W×D×H)	Unit size (W×D×H)	Tank capacity	Weight	Power consumption
505×300×150 mm	600×385×280 mm	13/18 L	12.2 kg	1,100 W



Getinge Elmasonic Med 300

Ultrasonic cleaning unit with 22-liter bath capacity, for cleaning up to 3 medical-norm tray baskets.

Lid and basket included.

Art. No.	Description
6003001203	Getinge Elmasonic Med 300, 220–240 V / 50–60 Hz
6003001215	Getinge Elmasonic Basket 300

Tank size (W×D×H)	Unit size (W×D×H)	Tank capacity	Weight	Power consumption
475×270×195 mm	575×360×330 mm	22 L	12.2 kg	1,500 W



Getinge Elmasonic Med 500

Ultrasonic cleaning unit with 40-liter bath capacity, for cleaning of instruments either in wire basket or in medical norm DIN tray baskets. Lid and basket included.



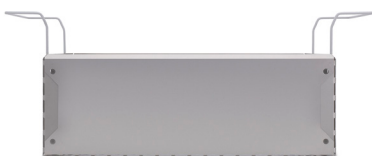
Art. No.	Description
6003001204	Getinge Elmasonic Med 500, 220–240 V / 50–60 Hz
6003001216	Getinge Elmasonic Basket 500

Tank size (W×D×H)	Unit size (W×D×H)	Tank capacity	Weight	Power consumption
500×330×290 mm	770×425×505 mm	40.3 L	30.4 kg	2,080 W



Getinge Elmasonic Med 900

Ultrasonic cleaning unit with 64-liter bath capacity, for cleaning of instruments either in wire basket or in medical norm DIN tray baskets. Lid and basket included.



Art. No.	Description
6003001205	Getinge Elmasonic Med 900, 220–240 V / 50–60 Hz
6003001217	Getinge Elmasonic Basket 900

Tank size (W×D×H)	Unit size (W×D×H)	Tank capacity	Weight	Power consumption
600×500×285 mm	870×595×505 mm	63.7 L	43.4 kg	2,960 W



Getinge Elmasonic Med 500 and 900 with Noise protection cover

Ultrasonic cleaning unit with 40-liter bath capacity, for cleaning of instruments either in wire basket or in medical norm DIN tray baskets. Lid and basket included.

Art. No.	Description
6003001226	Getinge Elmasonic Med 500 with noise protection cover, 220–240 V / 50–60 Hz
6003001227	Getinge Elmasonic Med 900 with noise protection cover, 220–240 V / 50–60 Hz

Description	Tank size (W×D×H)	Unit size (W×D×H)	Tank capacity	Weight	Power consumption
Getinge Elmasonic Med 500 with noise protection cover	500×330×290 mm	770×510×975 mm	40.3 L	34.7 kg	2,140 W
Getinge Elmasonic Med 900 with noise protection cover	600×500×285 mm	870×640×1145 mm	63.7 L	49.3 kg	2,960 W

Accessories

Art. No.	Description	Material	Loading weight	Size (W×D×H)
6003001212	Getinge Elmasonic Basket 60	Stainless steel 304	5 kg	255×115×75 mm
6003001213	Getinge Elmasonic Basket 180	Stainless steel 304	8 kg	280×250×115 mm
6003001214	Getinge Elmasonic Basket 200	Stainless steel 304	4 kg	490×255×95 mm
6003001215	Getinge Elmasonic Basket 300	Stainless steel 304	10 kg	455×250×110 mm
6003001216	Getinge Elmasonic Basket 500	Stainless steel 304	20 kg	460×300×195 mm
6003001217	Getinge Elmasonic Basket 900	Stainless steel 304	30 kg	545×460×190 mm
6003001218	Getinge Elmasonic Lid 60	Polypropylene		270×190×20 mm
6003001219	Getinge Elmasonic Lid 180	Polypropylene		405×340×20 mm
6003001220	Getinge Elmasonic Lid 200	Polypropylene		600×365×20 mm
6003001221	Getinge Elmasonic Lid 300	Polypropylene		575×335×20 mm
6003001222	Getinge Elmasonic Lid 500	Stainless steel 304		
6003001223	Getinge Elmasonic Lid 900	Stainless steel 304		
6003000098	Lid for two beakers, fits Getinge Elmasonic Med 60-300	Stainless steel 304		330×180×15 mm
6003001224	Getinge Elmasonic Noise protection cover 500	Stainless steel 304		580×495×65 mm
6003001225	Getinge Elmasonic Noise protection cover 900	Stainless steel 304		680×665×65 mm
6003000097	Beaker, 600 ml	Glass		80×105 mm
6003001228	Beaker, 1,000 ml	Glass		85×160 mm



Manual trolley washer

Time-saving, hygienic manual trolley washer with wall-mounted spray-gun unit, including holder for detergents. Connection to hot water (max 70°C) with 1/2" tubing or reinforced rubber hose. Equipped with adjustable spraying nozzle and 15 m tube. Works on normal water pressure. Cleaning agent is automatically injected into the water flow.

Art. No.	Description	Hose	Water connection	Weight
478727501	Manual trolley washer	15 m	1/2"	6.5 kg



Getinge Dina Rinsing Gun

The Dina Rinsing Gun, with eight screw-on attachments, is designed to be safe and easy to handle and is fully sterilizable. It guarantees excellent results regardless of cleaning with water or drying with air. When using attachments, even the most remote corners can be reached. The cleaning gun is easily disassembled by hand without the use of tools, which enables easy cleaning. The use of high-quality materials in combination with the latest manufacturing engineering ensures an unrestricted steam penetration. Usage of the cleaning gun also ensures working ergonomically.

- 1.5 m PVC-hose fabric reinforcement, open end of hose, 1/2"
- Attachment Set with 8 attachments
- Steam sterilizable (see Reprocessing Guide)

Art. No.	Description	Nozzles	Rack
6003000481	Spray-gun rinser	8 included	Included
6003000482	Gun with hose	–	–
6003000484	Table mount rosette, for cleaning gun Hela and Dina		



Getinge Hela Stainless Steel Cleaning Kit

The Hela Stainless Steel Cleaning Kit, with six screw-on attachments is designed for use with demineralized water and is sterilizable. The cleaning gun is easily disassembled by hand without the use of tools, which enables easy cleaning. The use of high-quality materials in combination with the latest manufacturing engineering ensures an unrestricted steam penetration. Usage of the cleaning gun also ensures working ergonomically.

- 1.5 m stainless steel hose, open end of hose, 1/2"
- Especially resistant to deionized water and chemical detergents
- Premium Set with six screw-on attachments, including an angled attachment holder
- Steam sterilizable (see Reprocessing Guide)

Art. No.	Description	Nozzles	Rack
6003000483	Stainless Steel Cleaning Kit	6 included	Included
6003000484	Table mount rosette, for cleaning gun Hela and Dina		



2

Instrument reprocessing: Clean zone

On leaving the washer-disinfector, the clean (but not sterile) goods enter the area for sorting, inspection and packing. For these tasks, Getinge has a full range of practical and easy-to-use equipment that can be adapted to suit different requirements and capacities. Mobility, efficiency and ergonomics are features that reflect the accessories in this area. Once sorted, inspected and packaged, the goods are placed in pass-through sterilizers.

Getinge Packing Stations

Smart and ergonomic design

Modern design with easy-to-clean surface and accessories

The Getinge line of inspection and packaging tables is designed with flexibility, ergonomics and functionality in mind. The interplay between smooth edges, robust stainless steel framework and fine work surface promotes improved cleaning and keeps dust away. The tidy elegant design is part of the Smart concept that we have developed for trolleys and loading equipment.



The packaging tables can be used as they are, fixed or height adjustable or it can be equipped with accessories from our range for an individually configured workstation. You can also choose one of our pre-configured workstations: Getinge Smart or T-DOC Packing Stations.



Packaging table

Designed for work with dry goods such as sorting, inspection and packing of various sets of surgical instruments in trays.

- Use as solitaire or equipped with optional accessories frame and accessories
- Optional drawer can be mounted on either side of the packaging table
- Can also be used as a sealer or side table

Packing tables without accessories	Worktop	Art. No. Length 1,200 mm	Art. No. Length 1,600 mm	Art. No. Length 1,800 mm	Art. No. Length 2,000 mm
Fixed height 900 mm	HP Core material	6003001108	6003001109	6003001110	6003001111
Fixed height 900 mm	Stainless steel	6003001112	6003001113	6003001114	6003001115
Height adjustable, 795–1,295 mm, 230 V / 50–60 Hz	HP Core material	6003001116	6003001117	6003001118	6003001119
Height adjustable, 795–1,295 mm, 230 V / 50–60 Hz	Stainless steel	6003001120	6003001121	6003001122	6003001123

Pre-Configured Packing Stations

Using the flexible system Getinge has configured these Packing Stations for customized solutions using practical designed accessories for many working methods.



Getinge Smart Packing Station

- High Pressure Laminate (HPL) or stainless steel table top, 2,000x800 mm
- Height adjustable (795–1,295 mm) or fixed height (900 mm)
- Accessories frame 2,000 mm
- Drawer unit with one drawer included, stainless with solid front
- Two small trays, 150x220 mm
- Two medium trays, 310x220 mm
- Two large trays, 250x350 mm
- Lamp holder



T-DOC Station

- High Pressure Laminate (HPL) or stainless steel table top, size 2,000x800 mm
- Height adjustable (795–1,295 mm) or fixed height (900 mm)
- Accessories frame 2,000 mm
- Drawer unit with one drawer included, stainless with solid front
- Small tray, 150x220 mm
- Medium tray, 310x220 mm
- Large tray, 250x350 mm
- Scanner holder
- Tarifold holder incl. 10 plastic pockets.
- Computer holder
- Screen holder
- Printer holder, small
- Lamp holder

Description	Worktop	Art. No. Fixed height	Art. No. Height adjustable
T-DOC Station	HP Core material	6003001100	6003001101
T-DOC Station	Stainless steel	6003001102	6003001103
Getinge Smart Packing Station	HP Core material	6003001104	6003001105
Getinge Smart Packing Station	Stainless steel	6003001106	6003001107

Accessories

Trays and shelves used for placement of scanners, printers, binders and other items necessary for the daily work, are attached to the frame with hooks for easy handling and rearrangement. Holders for screen and inspection lamp are attached to the frame with screw clamps to keep them in place in a safe way. The accessories are made of stainless steel and are powder coated for easy to keep clean surfaces



Accessories frame



Tray small



Tray medium



Tray large



Screen holder



Tarifold holder



Scanner holder



Computer holder



Printer holder



Drawer stainless steel



Lamp holder

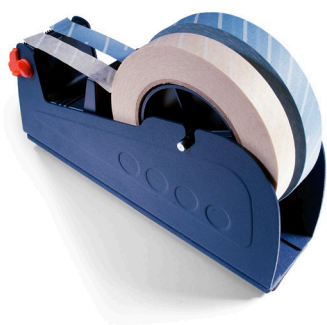
Art. No.	Description
1	6003001130 Accessories frame 1,200 mm
1	6003001131 Accessories frame 1,600 mm
1	6003001132 Accessories frame 1,800 mm
1	6003001133 Accessories frame 2,000 mm
2	6003001134 Tray small, 150x219 mm
3	6003001135 Tray medium, 310x219 mm
4	6003001136 Tray large, 250x349 mm
5	6003001137 Screen holder
6	6003001138 Tarifold holder incl. 10 pockets
7	6003001139 Scanner holder
8	6003001140 Computer holder
9	6003001141 Printer holder, small
10	6003001142 Drawer stainless steel
11	6003001144 Lamp holder

Linen inspection & folding table



Table for inspection and folding of linen. The tabletop is made of a high pressure (HP) core material in a soft white color and is equipped with a LED illuminated inspection surface. The generous size of the table allows comfortable work with large dressing sheets. Work can be carried out comfortably either standing or sitting. The frame is made of polished stainless steel. 100–240 V / 50/60 Hz.

Art. No.	Inspection panel	Size (W*D*H)
6003000680	900x1,000 mm	2,000x1,250x900 mm



Tape dispenser

This dispenser for sterilizer tape holds two reels of tape. The heavy-duty bottom plate, fitted with anti-slip rubber, prevents the dispenser from slipping when tape is torn off. Made of high quality coated steel for long use.

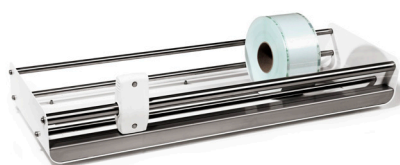
Art. No.	Size (W×D×H)
561570701	260×60×120 mm



Paper-dispensing trolley

Movable trolley, for storing of 4 different sizes of sterilizing wrapping paper sheets at the packing stations. The trolley is made of stainless steel tubes and is equipped with 4 pivoting ball bearing rubber wheels, two of which are equipped with brakes.

Art. No.	Size (W×D×H)
6003000685	1,416×718×995 mm



Cutting device

These roll dispensers can be used for both storage and cutting of clear-view packaging materials on rolls with a maximum diameter of approximately 220 mm. They are available in three different lengths, for wall or tabletop use. The sliding-action knife is completely built into the housing to prevent injury. Extra knives are available as spare parts.

Art. No.	Description	Size (W×D×H)
6003000308	Cutting device 600 mm	600×330×170 mm
6003000309	Cutting device 900 mm	900×330×170 mm
6003000310	Cutting device 1,200 mm	1,200×330×170 mm
6003000311	Holder for wall fixation	
6003000480	Cutting head	



Adjustable chair

The backrest and seat are adjustable in height and depth and upholstered with blue, easy-to-clean vinyl. The chair has a medium sized molded back that provides good lumbar support and a medium seat. The adjustment controls are located on the right-hand side of the seat. A footrest made of durable black polyamide is mounted on the gas-filled stem. Other surfaces are coated with non-porous black lacquer that provides good chemical resistance and hardness. The chair is delivered with castors for hard floors.

Art. No.	Description	Height adjustment
561528701	Adjustable chair, special	570–820 mm



Inspection lamps 3, 5 and 8 diopter

LED magnifying lamps with clamps are designed for work with visual inspection due to optimum magnifications, as well as powerful, uniform lighting over large areas. The inspection lamps are ideal for work at the CSSD or other smaller sterile units in hospitals and clinics. The lamps have flexible arms and are delivered with power supply unit EU plug type F.

Inspection lamp 3 diopter for general-purpose use. (1)
 Inspection lamp 5 diopter for high magnification. (1)
 Inspection lamp 8 diopter is suitable when working with smaller items as the magnification is very high. (2)

Art. No.	Description	Magnification	Diameter of the lens	Voltage	Power supply of power supply unit (V Dc)
6003000696	Inspection lamp 3 diopter EU	x 1.75 (175%)	150 mm	110–230 V, 50/60Hz	24V 12 Watt
6003000732	Inspection lamp 3 diopter UK	x 1.75 (175%)	150 mm	110–230 V, 50/60Hz	24V 12 Watt
6003000733	Inspection lamp 3 diopter AUS	x 1.75 (175%)	150 mm	110–230 V, 50/60Hz	24V 12 Watt
6003000697	Inspection lamp 5 diopter EU	x 2.25 (225%)	150 mm	110–230 V, 50/60Hz	24V 12 Watt
6003000734	Inspection lamp 5 diopter UK	x 2.25 (225%)	150 mm	110–230 V, 50/60Hz	24V 12 Watt
6003000735	Inspection lamp 5 diopter AUS	x 2.25 (225%)	150 mm	110–230 V, 50/60Hz	24V 12 Watt
6003000698	Inspection lamp 8 diopter EU	x 2.75 (275%)	127 mm	110–230 V, 50/60Hz	20V 10 Watt
6003000736	Inspection lamp 8 diopter UK	x 2.75 (275%)	127 mm	110–230 V, 50/60Hz	20V 10 Watt
6003000737	Inspection lamp 8 diopter AUS	x 2.75 (275%)	127 mm	110–230 V, 50/60Hz	20V 10 Watt
6003000738	Table Holder Inspection lamp	N/A	N/A	N/A	N/A

Hook system

The Hook Trolley is a range of convenient and flexible storage trolleys suitable for every facility.

Each trolley can be tailor-made to suit every special need, yet with flexibility to adapt as needs change. Simply choose one of the three trolley models, then select any of the many optional accessories from the range and hook them on the trolley. You can now load the trolley to serve convenient, dust-free storage or wheel it to the point of use.

The Trolleys are constructed entirely of stainless-steel tubes.

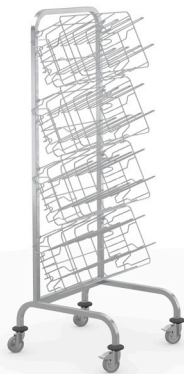


Hook trolley set for STU containers



- Set consisting of 4 holders for STU sterile goods containers
- Applicable for all standards
- Swivel castors Ø 100 mm. 2 with brakes.

Art. No.	Description
6003001574	Hook trolley for STU containers

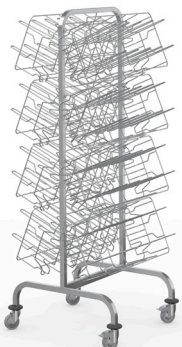


Hook trolley set for 20 pairs of shoes



- Set consisting of 4 baskets for surgical shoes
- Swivel castors Ø 100 mm. 2 with brakes

Art. No.	Description
6003001575	Hook trolley for 20 pairs shoes



Hook trolley set for 40 pairs of shoes



- Set consisting of 8 baskets for surgical shoes
- Maximum load per hook 30 kg
- Swivel castors Ø 100 mm. 2 with brakes.

Art. No.	Description
6003001576	Hook trolley for 40 pairs shoes



Enclosed hook trolley

The Enclosed hook trolley is of high quality and a reliable protection from dust and other outside conditions. The aluminum frame with stainless-steel side panels is light yet very sturdy and able to carry heavy loads. The integrated hook rack is firmly screwed to the rear wall and can be used to fasten any attachment from the Hook Trolley product range.

The trolley's contents are visible behind the plexiglass wing doors. The doors are held in place by magnets when closed or at an angle of 270° when opened.

- Robust aluminum frame with three solid stainless-steel panels
- Two plexiglass wing doors
- All-round impact protection even when doors are fully open
- Hook frame with 40 mm pitch
- Ø castors 125 mm

Art. No.	Description	Hook pairs	Dimensions (W×D×H)
6003001508	Enclosed hook trolley	4	837×576×1,720 mm



Hook trolley with single side loading



- Maximum load per hook 30 kg
- Disc bumpers
- Swivel castors Ø 100 mm. 2 with brakes.

Art. No.	Description	Hook pairs	Max. load per hook	Dimensions (W×D×H)
6003001500	Hook trolley single side 2 hook	2	30 kg	605×465×1,097 mm
6003001501	Hook trolley single side 3 hook	3	30 kg	605×465×1,460 mm
6003001502	Hook trolley single side 4 hook	4	30 kg	620×605×1,620 mm



Hook trolley with double side loading



- Maximum load per hook 30 kg
- Disk bumpers
- Swivel castors Ø 100 mm. 2 with brakes.

Art. No.	Description	Hook pairs	Max. load per hook	Dimensions (W×D×H)
6003001503	Hook trolley double side 4 hook	4	30 kg	675×605×1,097 mm
6003001504	Hook trolley double side 6 hook	6	30 kg	675×605×1,460 mm
6003001505	Hook trolley double side 8 hook	8	30 kg	675×605×1,620 mm



Hook trolley with triple side loading



- Maximum load per hook 30 kg
- Disk bumpers
- Swivel castors Ø 100 mm. 2 with brakes.

Art. No.	Description	Hook pairs	Max. load per hook	Dimensions (W×D×H)
6003001506	Hook trolley triple side 15 hook	15	30 kg	1,000×605×1,907 mm



Hook trolley Medidul



- Maximum load per hook 30 kg
- Disk bumpers
- Swivel castors Ø 100 mm. 2 with brakes.

Art. No.	Description	Hook pairs	Max. load per hook	Dimensions (W×D×H)
6003001507	Hook trolley Medidul	15	30 kg	1,005×650×1,657 mm

L-shape profile rail for hook trolley Medidul



- Package content: 1 pair
- Supporting surface 60 mm
- Stainless steel

Art. No.	Description	Insertions	Dimensions (W×D×H)
6003001519	Medidul L-shaped rails	L-shape profile rails	594×84×39 mm

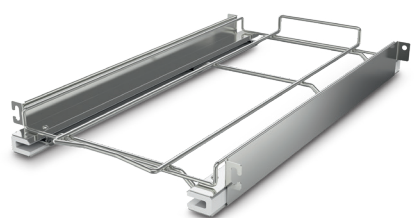
U-shape profile rail for hook trolley Medidul



- Package content: 1 pair
- Supporting surface 14 mm
- Stainless steel

Art. No.	Description	Insertions
6003001520	Medidul L-shaped rails	U-shape profile rails

Pull-out frame set for hook trolley Medidul



- Appr. $\frac{3}{4}$ extension
- Stainless steel
- For STU containers and baskets
- For ISO containers and baskets

Art. No.	Description	Dimensions (W×D×H)
6003001521	Pull-out frame set ISO	595×448×66 mm
6003001522	Pull-out frame set STU	595×296×60 mm

Insert shelf



- Perforated
- For placing on L-shaped rails
- Stainless steel

Art. No.	Description	Dimensions (W×D×H)
6003001523	Insert shelf Medidul	600×300×15 mm

Attachments for hook trolley

The wall-mounted hook rails are designed for quick and safe hanging, reorganization and removal of storage baskets and attachments. The customized arrangement guarantees safe handling of material and easy removal of consumables.

A wide selection of attachments for wall-mounted hook rails can be attached and these are listed in the pages below.



Wall-mounted hook rails

- Welded hooks
- 30 kg maximum load per hook
- Tube ends closed with plastic caps



Art. No.	Description	Dimensions height	Hook spacing
6003001509	Wall-mounted hook rail 2 hook 700	700 mm	350 mm
6003001510	Wall-mounted hook rail 3 hook 1050	1,050 mm	350 mm
6003001511	Wall-mounted hook rail 4 hook 1400	1,400 mm	350 mm
6003001512	Wall-mounted hook rail 5 hook 1750	1,750 mm	350 mm
6003001513	Wall-mounted hook rail 2 hook 900	900 mm	410 mm
6003001514	Wall-mounted hook rail 3 hook 1300	1,300 mm	410 mm
6003001515	Wall-mounted hook rail 4 hook 1600	1,600 mm	410 mm
6003001516	Wall-mounted hook rail 4 hook 900	900 mm	215 mm
6003001517	Wall-mounted hook rail 6 hook 1300	1,300 mm	215 mm
6003001518	Wall-mounted hook rail 7 hook 1600	1,600 mm	215 mm

Attachment for hook trolley and hook rails

The wide variety of available attachments means that the hook trolleys and wall mounted hook-rails can be adapted to many distinct functions and tasks. They are all characterized by excellent workmanship, durability, functionality, and ergonomics for safe and efficient work processes.



Shoe basket

- Up to 5 pairs of shoes
- Electropolished stainless steel

Art. No.	Description	Dimensions (W×D×H)
6003001524	Shoe basket	585×300×320 mm



Wire holder for theatre-clogs

- Up to 6 pairs of shoes
- Closed wire loops
- Electropolished stainless steel

Art. No.	Description	Dimensions (W×D×H)
6003001525	Wire holder for theatre-clogs	600×263×191 mm



Shoe rack

- Up to 6 pairs of shoes
- Electropolished stainless steel

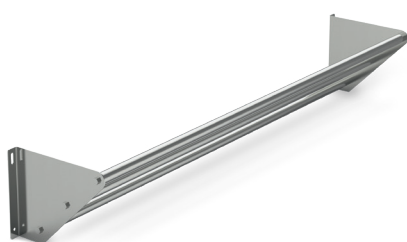
Art. No.	Description	Dimensions (W×D×H)
6003001526	Shoe rack	600×320×234 mm



Wire holder for sterilization rolls

- For foil rolls of different widths
- Electropolished stainless steel

Art. No.	Description	Dimensions (W×D×H)
6003001527	Wire holder for sterilization rolls	630×270×194 mm



Paper holder for wall mounted hook-rails

- Electropolished stainless steel
- 3 levels

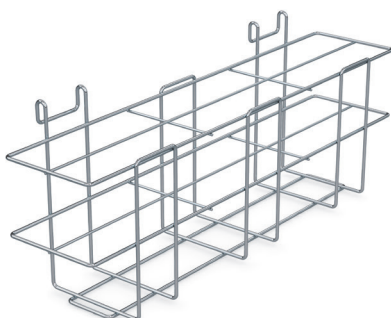
Art. No.	Description	Dimensions (W×D×H)
6003001528	Paper holder for wall mounted hook-rails	1,250×240×200 mm



Sterilization pouch roll cutter for wall-mounted hook rails

- Holder for storing, cutting, and dispensing sterile packaging in the form of foil rolls
- Complete cut of the tubular foil, even when fully loaded
- Electropolished stainless steel

Art. No.	Description	Cutting width	Dimensions (W×D×H)
6003001577	Roll cutter 1,140 mm for hook trollies	1,140 mm	1,253×373×294 mm
6003001578	Roll cutter 1,390 mm for hook trollies	1,390 mm	1,510×373×294 mm
6003001579	Roll cutter 790 mm for hook trollies	790 mm	903×373×294 mm
6003001580	Roll cutter 510 mm for hook trollies	510 mm	623×373×294 mm



Wire holder for disposable gloves

- Up to 6 disposable glove boxes
- Effective dimensions: 180×54 mm (per compartment)
- Electropolished stainless steel

Art. No.	Description	Dimensions (W×D×H)
6003001529	Holder for disposable gloves	555×139×215 mm



Glove dispenser

- 3 compartments for different gloves
- Stainless steel

Art. No.	Description	Dimensions (W×D×H)
6003001530	Glove dispenser	580×327×271 mm



Holder for laundry/waste bags

- For 1 laundry or waste bag 60–70 l
- Electropolished stainless steel

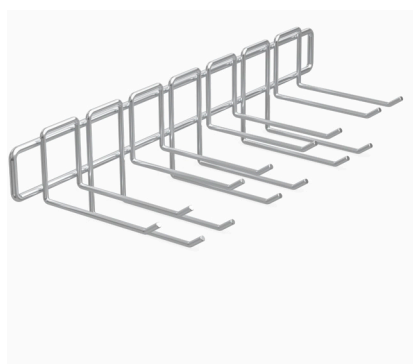
Art. No.	Description	Dimensions (W×D×H)
6003001581	Holder for laundry, waste bags	555×313×240 mm



Wire holder with hooks

- Effective length of hooks: 150 mm
- Electropolished stainless steel
- Clear storage of the sterile goods

Art. No.	Description	Hook pairs	Dimensions (W×D×H)
6003001531	Wire holder with hooks 4 pairs	4	555×182×82 mm
6003001532	Wire holder with hooks 3 pairs	3	636×186×71 mm



Wire holder for endoscopes

- Effective length of hooks: 150 mm
- Electropolished stainless steel
- Clear storage of the sterile goods

Art. No.	Description	Hook pairs	Dimensions (W×D×H)
6003001582	Wire holder for endoscopes	7	555×163×122 mm



Wire holder for tubes and cables

- 11 closed wire loops
- Electropolished stainless steel

Art. No.	Description	Dimensions (W×D×H)
6003001534	Wire holder for tubes and cables	600×113×181 mm



Sterile goods shelf

- Welded wire loops
- Electropolished stainless steel

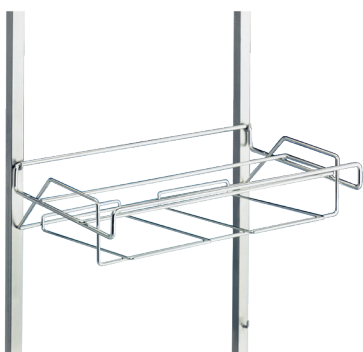
Art. No.	Description	Dimensions (W×D×H)
6003001585	Wire holder for STU containers	612×316×300 mm



Wire holder for STU containers

- Electropolished stainless steel

Art. No.	Description	Dimensions (W×D×H)
6003001533	Wire holder for STU containers	612×316×300 mm



Wire holder for polymer STU container and its lid

- For containers and bins in STU format
- With shelf for a lid
- Electropolished stainless steel

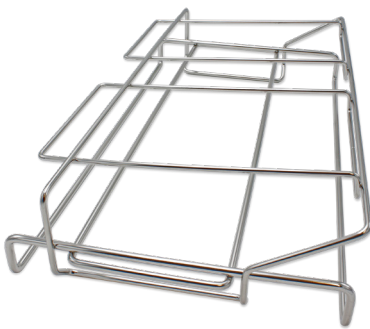
Art. No.	Description	Dimensions (W×D×H)
6003001550	Holder for polymer STU container	622×311×272 mm



Wire holder for STU container

- Secure, open storage
- High-quality Electropolished stainless steel
- Optimum hygiene

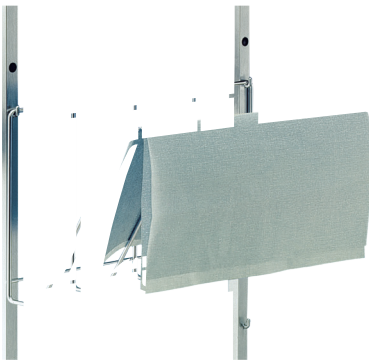
Art. No.	Description
6003001583	Wire holder for STU container



Wire holder for special container

- Max. 1 special container 530×325 mm with lid
- Electropolished stainless steel

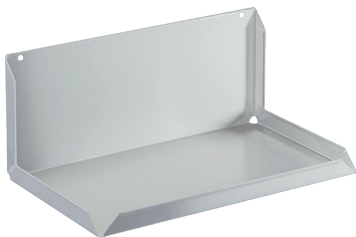
Art. No.	Description	Dimensions (W×D×H)
6003001584	Wire holder for special container	556×317×130 mm



Paper holder

- For paper sheets for sterile packaging
- Electropolished stainless steel

Art. No.	Description	Dimensions (W×D×H)
6003001535	Paper holder	612×316×300 mm



Universal shelf with back

- With rear wall and upstands on the sides
- For universal use
- Stainless ste

Art. No.	Description	Dimensions (W×D×H)
6003001538	Universal shelf with back	600×360×260 mm



Universal shelf with support

- With rear wall and upstands on the sides
- For universal use
- Stainless steel

Art. No.	Description	Dimensions (W×D×H)
6003001539	Universal shelf with support	695×350×165 mm



Shelf

- For notebook or computer monitor
- Electropolished stainless steel

Art. No.	Description	Dimensions (W×D×H)
6003001536	Shelf	575×390×155 mm



Writing desk

- With inclined writing surface and upstand in the front
- Stainless steel

Art. No.	Description	Dimensions (W×D×H)
6003001537	Writing desk	580×340×225 mm



Double shelf unit

- Shelf dimensions: 540×190 mm
- Shelf spacing: 190 mm
- Stainless steel

Art. No.	Description	Dimensions (W×D×H)
6003001586	Double shelf unit	560×200×305 mm



Universal holder for containers

- For wire and plastic bins containers
- For size 3, 4 and 5 storage bins
- Stainless steel

Art. No.	Description	Dimensions (W×D×H)
6003001540	Holder for containers	655×20×109 mm



Universal holder for containers

- For wire and plastic bins containers
- For size 3, 4 and 5 storage bins
- Stainless steel

Art. No.	Description	Dimensions (W×D×H)
6003001541	Two-level holder for container	690×20×329 mm



Blue polymer storage bin

- For hanging on universal holder
- Temperature resistant from -40 °C to 80 °C
- Polyethylene

Art. No.	Description	Dimensions (W×D×H)
6003001544	Plastic bin blue, size 3	350×210×200 mm
6003001545	Plastic bin blue, size 4	230×150×125mm
6003001546	Plastic bin blue, size 5	170×100×75mm



Green polymer storage bin

- For hanging on universal holder
- Temperature resistant from -40 °C to 80 °C
- Polyethylene

Art. No.	Description	Dimensions (W×D×H)
6003001547	Plastic bin green, size 3	350×210×200 mm
6003001548	Plastic bin green, size 4	230×150×125mm
6003001549	Plastic bin green, size 5	170×100×75mm



Wire container

- For transport, storage, and provision of small parts for medical use
- For hanging on universal holder
- Electropolished stainless steel

Art. No.	Description	Dimensions (W×D×H)
6003001542	Wire containers, size 3	350×215×200 mm
6003001543	Wire containers, size 4	231×153×125 mm



Basket for medical equipment rails

- Mesh size: 8×8 mm
- For hanging on universal holder
- Electropolished stainless steel

Art. No.	Description	Dimensions (W×D×H)
6003001587	Basket medical equipment size 1	150×100×200 mm
6003001588	Basket medical equipment size 2	150×100×280 mm
6003001589	Basket medical equipment size 3	150×100×480 mm



Angled support for STU basket

- With inclined writing surface and upstand in the front
- Stainless steel

Art. No.	Description	Dimensions (W×D×H)
6003001590	Angled support for STU basket	62×35×111 mm



Wired shelf

- Open to the front for quickest access
- Electropolished stainless steel

Art. No.	Description	Dimensions (W×D×H)
6003001591	Wired shelf, depth 285 mm	1,480×285×150 mm
6003001592	Wired shelf, depth 395 mm	1,480×395×150 mm

Shelf basket



- Access-friendly engagement slope
- Can be divided with wire basket dividers
- Electropolished stainless steel

Art. No.	Description	Dimensions (W×D×H)
6003001593	Shelf basket Depth 285 mm	575×285×150 mm
6003001594	Shelf basket Depth 395 mm	575×395×150 mm

Separating grid for shelf baskets



- Optimum use of the storage space
- Quick adjustment
- Effortless hooking in and removal

Art. No.	Description	Dimensions (W×D×H)
6003001595	Divider for shelf baskets 295 mm	258×125×10 mm
6003001596	Divider for shelf baskets 395 mm	368×125×10 mm

Sterile goods baskets – stackable on top of each other

Stacked on top of each other, these baskets allow clearly arranged provision of working material and sterile supplies.

Versions with straight access openings, inclined access openings and access and handle openings allow instant access to baskets and the items in them.

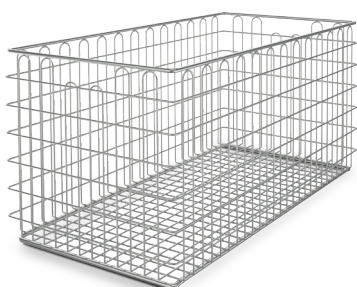
Baskets filled with sterile supplies can be stacked on top of each other without any problems. They are also suitable for hanging on wall-mounted hook rails, hook racks and hook trolleys.



Stackable STU sterile goods basket 575×280 mm

- Stackable on top of each other
- With handle opening
- Size 575×280 mm

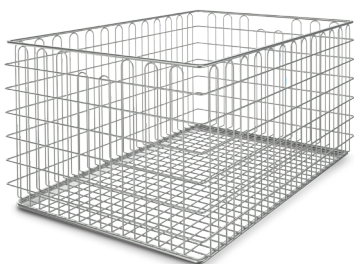
Art. No.	Description	Design	STU	Dimensions (W×D×H)
6003001551	Basket ½ STE handle opening	With handle opening	½	575×280×135 mm
6003001552	Basket ½ STE inclined opening	With inclined access opening	½	575×280×135 mm
6003001553	Basket 1 STE handle opening	With handle opening	1	575×280×265 mm
6003001554	Basket 1 STE inclined opening	With handle opening and access opening	1	575×280×265 mm
6003001555	Basket 2 STE handle opening	With handle opening	2	575×560×265 mm



Stackable STU sterile goods basket 600×300 mm

- Stackable on top of each other
- With handle opening
- Size 600×300 mm

Art. No.	Description	Design	STU	Dimensions (W×D×H)
6003001556	Basket 1 STU handle opening	With handle opening	1	600×300×300 mm
6003001557	Basket ½ STE inclined opening	With handle opening	½	600×300×150 mm
6003001558	Basket ½ STU inclined opening	With inclined access opening	½	600×300×150 mm
6003001559	Basket 1 STU handle and access	With handle opening and access opening	1	600×300×300 mm

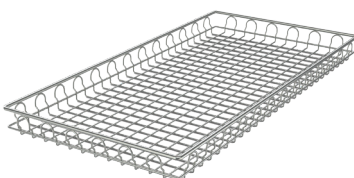


Stackable ISO sterile goods basket 600×400 mm

- Stackable on top of each other
- With handle opening
- Size 600×400 mm

Art. No.	Description	Design	ISO	Dimensions (W×D×H)
6003001560	Basket 1 ISO handle opening	With handle opening	1	600×400×300 mm
6003001561	Basket 1 ISO inclined opening	With handle opening and access opening	1	600×400×300 mm
6003001562	Basket ½ ISO handle opening	With handle opening	½	600×400×150 mm

Stackable STU sterile goods basket 600×300 mm



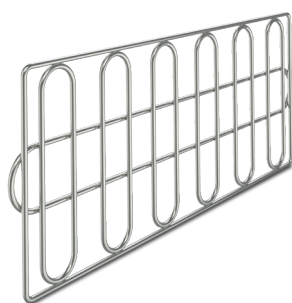
This special basket is designed for holding and storing instruments and large trays. It is suitable for Norm 5 Medidul shelving systems, cabinet systems with L rails and use in the Hupfer Känguruh System®.

- With pull-out frame
- Edge protection for safety
- Size 600×300mm

Art. No.	Description	Design	STU	Dimensions (W×D×H)
6003001563	Stackable low STU basket	With pull-out frame	½	600×300×44 mm

Basket divider

- Wire thickness: Ø 2.5 mm



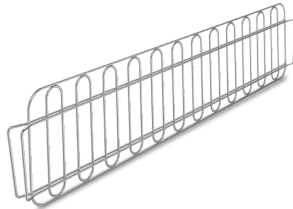
Art. No.	Description	Dimensions (W×D×H)
6003001564	Basket divider for 6003001554	278×118 mm
6003001565	Basket divider for 6003001557	298×126 mm
6003001566	Basket divider for 6003001553	278×241 mm
6003001567	Basket divider for 6003001556	298×271 mm
6003001568	Basket divider for 6003001552	262×126 mm



Wire basket divider

- Wire thickness: \varnothing 2.5 mm

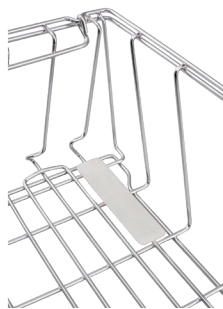
Art. No.	Description	Dimensions (W*H)
6003001569	Basket divider for 6003001558	282*141 mm
6003001570	Basket divider for 6003001562	398*121 mm



Wire basket divider

- Wire thickness: \varnothing 2.5 mm

Art. No.	Description	Dimensions (W*H)
6003001571	Basket divider for 6003001557	598*126 mm
6003001572	Divider 6003001556, 6003001559	598*271 mm



Damage protection clip for the sterile goods basket

- Suitable for baskets with 3.5 mm wire thickness
- Especially for insertable STU sterile goods baskets

Art. No.	Description	Design	Dimensions (W*H)
6003001573	Damage protection clip	Basket 6003001557	101*25



Dispenser for Sterile baskets

Dispenser in self-supporting and hygienic design, made of high-quality stainless steel. Closed base plate folded on all sides. Installed on top is a closed spring case with a height-adjustable closed platform with continuous upstand and ball bearing platform guide. Consistent output height thanks to manually adjustable stainless steel tension spring system. Four massive polymer corner bumpers, of which two at the upper corners of the structure that serve as bumpers and protect the equipment on all sides as well as building-side walls from being damaged, with integrated, ergonomically-shaped push bars. Dispenser runs on 4 swivel casters of which 2 with total locks, ø 4.9" (125 mm. Load capacity: approx. 120 kg).

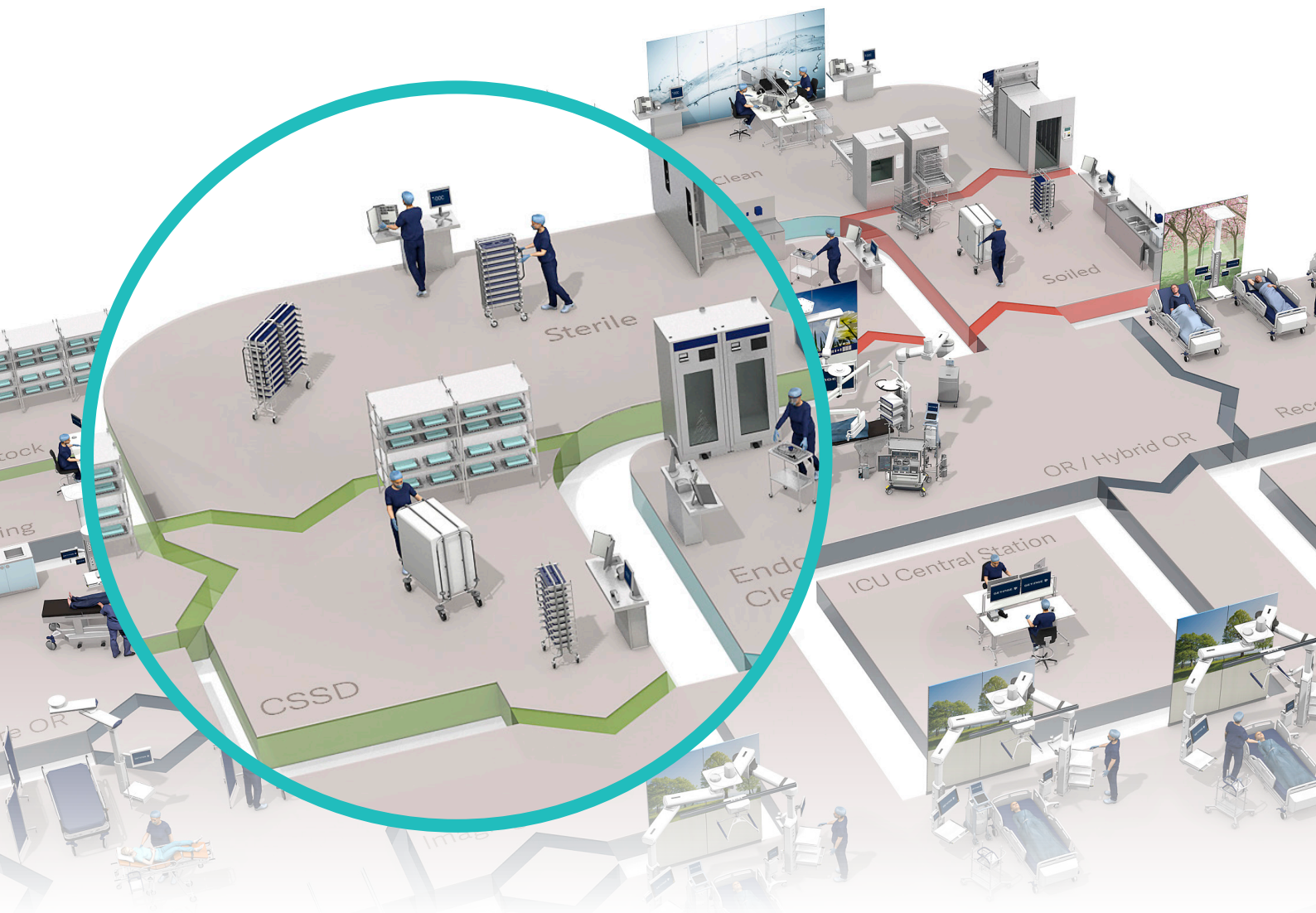
Art. No.	Description	Size (W×D×H)
6003000205	Dispenser for Sterile Baskets	802×715×899 mm



Table trolleys

Multi-purpose ergonomical trolleys suitable for internal transports or temporary utility space. Made of all-welded chrome-plated steel tubing with handlebars. Top and bottom shelves are made of pressed stainless steel with a beaded edge. Fitted with four 125 mm anti-static wheels for easy handling.

Art. No.	Description	Wheel diameter	Size (W×D×H)	Shelf size (W×D)
6003000682	Table trolley	125 mm	1,080×550×800 mm	950×550 mm
6003000681	Instrument trolley	75 mm	640×400×850 mm	600×400 mm



3

Instrument reprocessing: Sterile zone

On completion of the sterilization process, the sterilizers are unloaded with Getinge's ergonomic, user-friendly equipment. The goods are then further transported to sterile storage or directly to the point of use. Whatever the type of goods carrier and transport, Getinge has the right equipment. All of these products will be found in the next chapter.



Basket rack

SPRI

Single or double basket racks for Getinge's SPRI modular wire baskets in sterile storage and/or for pre-storage of clean packed goods. The rack is designed as an open unit to promote aeration of sterilized goods and to make inspection of stored goods as easy as possible.

Baskets are loaded and unloaded by conveniently sliding them on rigid, horizontal guide-rails, consisting of 50×20 mm steel profiles. The single rack is a free-standing section that holds 7 baskets. The double rack consists of two single sections back to back, i.e. holding 14 baskets.

Single rack			Double rack		
Art. No.	Sections	Size (W×D×H)	Art. No.	Sections	Size (W×D×H)
470467271	2×7	1,245×425×1,775 mm	470467371	2×2×7	1,245×425×1,775 mm
470467272	3×7	1,840×425×1,775 mm	470467372	3×2×7	1,840×425×1,775 mm
470467273	4×7	2,440×425×1,775 mm	470467373	4×2×7	2,440×425×1,775 mm
470467274	5×7	3,035×425×1,775 mm	470467374	5×2×7	3,035×425×1,775 mm
470467275	6×7	3,630×425×1,775 mm	470467375	6×2×7	3,630×425×1,775 mm



Wire storage shelf

Modular-built, free-standing shelf unit for storage of clean linen, instruments, packing material or sterilized goods, including disposables. Each unit has five shelves that are designed as a wire construction, allowing good air circulation and at the same time permitting easy inspection of the goods. The wire shelves are made of special steel, chromium-plated and surface-treated with clear epoxy varnish. The special finish makes cleaning easy. The shelf unit is easy to assemble on site and all parts fit well. The shelf unit can also be used as a mobile storage unit with optional Ø 125 mm castors.

455 mm depth – Basic module 5 shelves		610 mm depth – Basic module 5 shelves	
Art. No.	Size (W×D×H)	Art. No.	Size (W×D×H)
478728870	610×455×1,895 mm	561737570	610×610×1,895 mm
478728871	914×455×1,895 mm	561737571	914×610×1,895 mm
478728872	1,220×455×1,895 mm	561737572	1,220×610×1,895 mm
478728873	1,524×455×1,895 mm	561737573	1,524×610×1,895 mm
478728874	1,830×455×1,895 mm	561737574	1,830×610×1,895 mm

Art. No.	Description
464010580	Castor, non-lockable, 1 pc
464010581	Castor, lockable, 1 pc



Getinge Smart Open Distribution Trolley (DTO)



Getinge DTO is an open distribution trolley as well as a mobile storage unit for wire baskets and containers. The open design makes viewing and picking of individual packs very easy. Goods can be loaded and unloaded from both sides of the trolley. Shelves and baskets can be pulled out halfway for easier access and the trolley is easily secured for safe transport.

Getinge Smart Open Distribution Trolleys are available in single or double versions of each model: three models configured for standard loads, delivered with guides for baskets, shelves for containers or mixed. Furthermore there is one base model that can be individually configured, where guides are specified and ordered separately for each customer's individual configuration of a mixed load of shelves and/or baskets. The flexible placement of support guides and shelves maximizes utilization of the DTO.

The high-quality swivel casters (two of which are lockable) enable easy to moving and maneuvering even when the trolley is fully loaded. These trolleys are designed for cleaning and disinfection in an automatic washer-disinfector.

DTO single

Type of load	Description	Art. No.	Max load	Dimensions (W*D*H)
Baskets	DTO single SPRI, 10 low or 5 high	564718170	85 kg	736×429×1,577 mm
Mixed	DTO single, 2 SPRI high/3 shelves	564718370	85 kg	736×429×1,577 mm
Shelves	DTO single, 5 shelves	564718570	85 kg	736×429×1,577 mm
Individually configured	DTO single base without guides	564718070	85 kg	736×429×1,577 mm

DTO double

Type of load	Description	Art. No.	Max load	Dimensions (W*D*H)
Baskets	DTO double SPRI, 20 low or 10 high	564718770	170 kg	1,416×429×1,577 mm
Mixed	DTO double, 4 SPRI high / 6 shelves	564718870	170 kg	1,416×429×1,577 mm
Shelves	DTO double, 10 shelves	564718970	170 kg	1,416×429×1,577 mm
Individually configured	DTO double base without guides	564718670	170 kg	1,416×429×1,577 mm

Options

Description	Art. No.	Max load	Dimensions (W*D*H)
Pair of guides SPRI	564718171	18 kg	30×425×50 mm
Pair of guides ISO	564718271	18 kg	30×425×50 mm
Pair of guides and shelf	564718571	18 kg	30×425×50 mm
External transport lock	564718470		
Rack for disposable covers	560181301		
Disposable transparent covers, 50 pcs/roll	560125070		
Reusable cover for DTO single	6003000052		
Reusable cover for DTO single, green	6003000509		
Reusable cover for DTO double	6003000053		



Protective covers

The open distribution trollies DTO and BUS can be fitted with covers for further protection of the goods during transport and storage. The range includes both disposable plastic covers and washable cloth covers. The cloth covers have zippers in two corners so that one long side can be opened for easy access to the goods.

Art. No.	Description
6003000052	Reusable cover for DTO single, blue
6003000059	Reusable cover for DTO single, green
6003000053	Reusable cover for DTO double, blue
560125070	Transparent disposable cover roll, 50 covers/roll
560099601	Reusable cover for BUS, blue (for 1,535 mm height)



Rack for disposable covers

The mobile rack makes it easy to place a disposable cover (560125070) over the BUS trolley. It is made of high-quality stainless steel. All wheels have brakes for convenient handling. The rack is also available in a wall-mounted version. Transparent disposable covers are ordered separately.

Art. No.	Description	Size (W×D×H)
560181301	Rack for disposable covers (BUS)	700×1,000×1,940 mm
560181302	Wall-mounted rack	
560125070	Transparent disposable cover roll, 50 covers/roll	



Getinge Smart Distribution Trolley Hard Cover (DTHC)



In this trolley, instrument containers and baskets can be grouped together with utensils, linen, disposables and anesthesia material for transport to an internal OR department or to an external hospital or storage facility. The hard cover protects the sterile goods from dust and damage during transport. The trolley can be cleaned/disinfected in a washer-disinfector, as the doors can be opened 260° and fixed in the open position – also very convenient when loading and unloading. The door handle is prepared for a locking device. The DTHC trolley is equipped with two lockable swivel casters and two lockable fixed casters. The caster diameter is 160 mm.

The DTHC trolley has a capacity of 15 DIN STU ½ size, if adding two additional shelves. Three (3) shelves are supplied as standard, optional shelves are available. Each shelf is supplied with two dividers to keep goods in place during transport. An optional pin and tow bar is available to enable towing.

Art. No.	Description	Max load	Size (W×D×H)
564719070	Distribution Trolley Hard Cover (DTHC)	145 kg	1,286×699×1,502 mm
564719071	Wire shelf incl. 2 dividers		
564719075	Pin and tow bar		

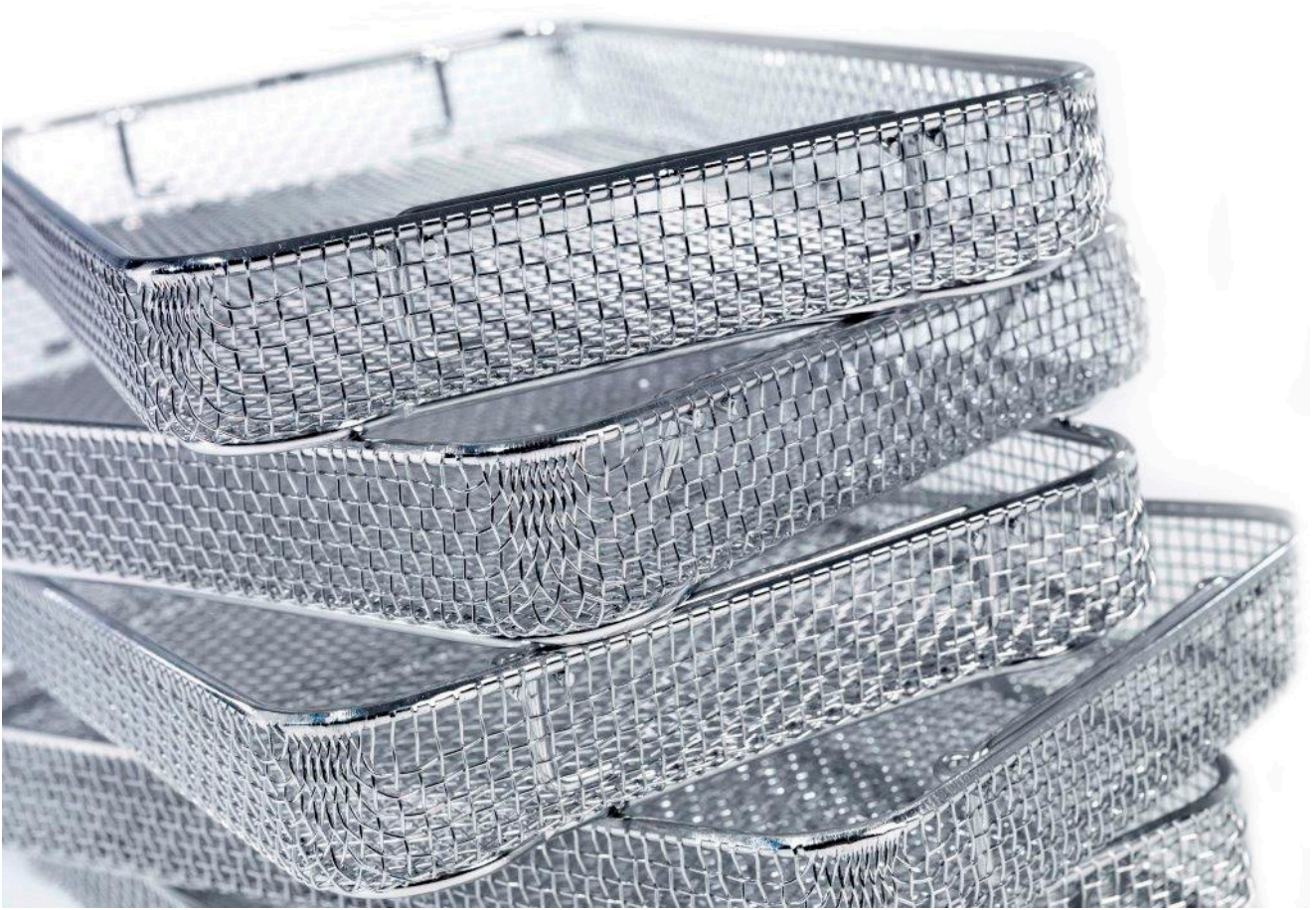


Closed transport trolley



A fully welded durable construction in 18/10 stainless steel. Capacity: 9 STU with 3 solid removable shelves/4 levels (3×3 STU) for great flexibility. Fitted with 2 fixed castors and 2 swivel castors with brakes. Housing of 18/10 stainless steel suitable for cabinet washers. Wheel dimension 160 mm. Doors open to a maximum of 270°.

Art. No.	Description	Size (W×D×H) External	Size (W×D×H) Internal
561720202	Closed transport trolley, lockable	1,220×735×1,450 mm	994×640×1,075 mm



4

Trays & baskets

Through the sterile flow, standardized modular load carriers, in the form of wire baskets or containers, carry the instruments all the way from the OR and back again after completed cleaning, disinfection, inspection and sterilization. Our comprehensive range of hygienically designed trays and baskets forms an essential part of Getinge's complete system. Easy to handle, easy to clean and perfectly adapted to the demands of modern hospitals and other applications, they are all designed for flexibility.



Wire basket



Modular wire baskets made of stainless steel. Adapted to Getinge washer-disinfectors, conveyors, loading/unloading equipment, sterilizers as well as storage racks and distribution trolleys. Stackable when loaded, nestable when empty.

Art. No.	Size (W×D×H)	Description
561620001	585×395×195 mm	High
561620101	585×395×100 mm	Low

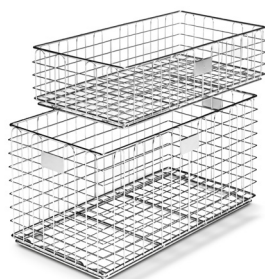


Lid for SPRI wire basket



Ideal for mixed loads of baskets and containers. When equipped with a lid, it is possible to stack a container on top of the basket without risking damage to the contents of either. This also means greater flexibility and utilization of space, both when loading a sterilizer and during storage and transport. The lid is made of electro polished stainless steel.

Art. No.	Size (W×D)
561685301	555×385 mm



Wire basket



Modular wire baskets made from high-quality stainless steel. The baskets have a smooth finish with large mesh loops of continuous wire. The baskets are stackable and have integrated handles for easy gripping. Available in sizes ½ STU and 1 STU.

Art. No.	Size (W×D×H)	Description
5619247	575×280×135 mm	½ STU
5619248	575×280×265 mm	1 STU



Fine-mesh basket



This fine-mesh basket with lid is ideal for holding small, sharp instruments during the washing/disinfection process. The basket is made of stainless steel with mesh size 1.5 mm.

Art. No.	Size (W×D×H)
499363700	100×100×60 mm
499363701	60×60×45 mm
499363702	120×60×45 mm
499363703	150×60×45 mm



Fine-mesh instrument tray



Fine-mesh sterilizing and processing tray designed for use with modular sterilizing, processing baskets and instrument trays. For delicate instruments through all phases of processing: cleaning and disinfection, ultrasonic cleaning and sterilization. Mesh size: 1.6 mm. Clean surfaces and no exposed wire ends. Material: stainless steel

Fine-mesh instrument tray		Lid
Art. No.	Size (W×D×H)	Art. No.
932895	210×150×40 mm	932896
932894	310×210×40 mm	476944000
705300	420×310×40 mm	705320

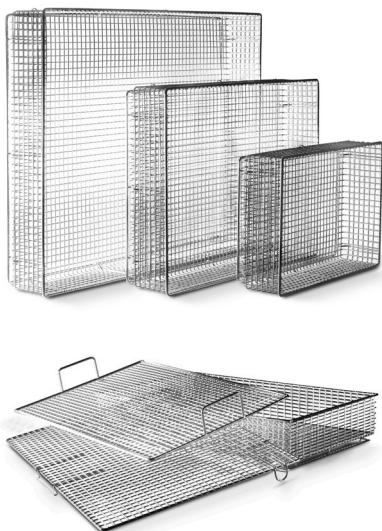


Instrument tray



Modular instrument tray for use through all phases of instrument processing. Manufactured as a deep-molded immersion tray, giving exact dimensions and stability against careless handling. Made of stainless steel wire net and equipped with two inner-mounted drop handles.

Art. No.	Size (W×D×H)
6003000620	480×250×50 mm
6003000621	240×250×50 mm



Instrument tray



Stackable instrument tray in standard sizes for use through all phases of instrument processing. Easy to clean and disinfect in a washer-disinfector and designed for fast self-drying. Made of stainless steel, electro-polished wire with a mesh size (6.5 mm) large enough to allow the flow of air and water, yet small enough to prevent instrument damage.

Select from two types of lids for full utilization of the trays:

Lid with snap-on locking.

Lid with handle for placement inside the tray. Keeps small instruments in place during the disinfection process.

Instrument tray		Lid	Lid with handle
Art. No.	Size (W×D×H)	Art. No.	Art. No.
6003000701	450×340×70 mm	477345200	498816902
6003000702	340×250×70 mm	477345300	498816901
6003000703	250×170×70 mm	498637400	498816900



Perforated instrument tray



With flat wire base and perforated side walls, for use through all phases of instrument processing. The perforated sidewall protects smaller instruments and packing material against damage. Made of stainless steel material. Equipped with two inner mounted drop handles.

Art. No.	Size (W×D×H)
6003000237	480×250×60 mm
6003000238	240×250×60 mm



Endoscope basket



Suitable for cleaning, sterilization, storage and transport of endoscopic instruments. No open wire ends or sharp protrusions. Removable lid with special closing device. The silicon holders keep the instruments securely in place. Material: stainless steel

Art. No.	Size (W×D×H)	Description
561620701	290×80×52 mm	For one endoscope
561620702	290×80×52 mm	For two endoscopes
561620801	460×80×52 mm	For one endoscope
561620802	460×80×52 mm	For two endoscopes
561620901	670×80×52 mm	For one endoscope



Identification tag



For use on baskets in sterile storage.

Art. No.	Size (W×D×H)	Description
561585401	85×45 mm (+15 mm loop)	Marking tag with plastic pocket



Instrument fixation system

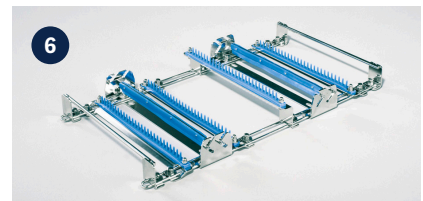
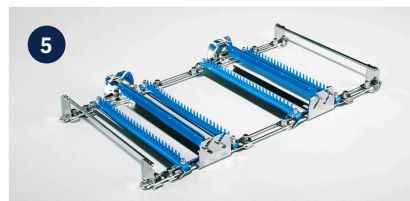
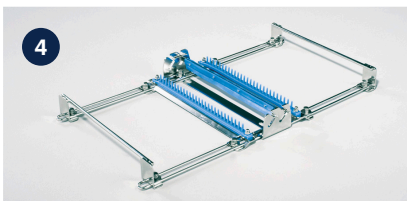
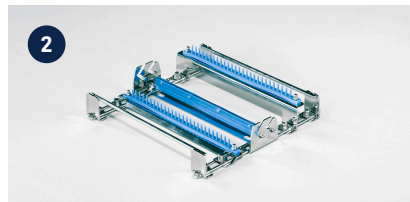
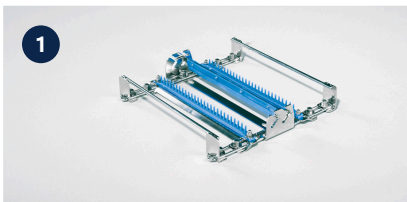


SPRI

DIN

ISO

For safe storing of either general or bayonet-shaped or long shank instruments in instrument trays. Suitable for all instrument trays of STU standards according to DIN 58952-2, as well as for the SPRI trays. Can be firmly fixed in the instrument trays, if so required. Infinitely adjustable to the instruments to be stored. Use within the complete instrument cycle, i.e. cleaning, sterilization, instrumentation, without any additional handling.



Art. No.	For tray length min. 240 mm	Size (W×D×H)
1	561958001 For general instruments/one fixation	231×227×50 mm
2	561958101 For bayonet-shaped instruments/one fixation	231×227×50 mm
3	561958501 For general instruments, adjustable fixation 60–214 mm	214×240×50 mm
For tray length min. 480 mm		Size (W×D×H)
4	561958201 For general instruments/one fixation/480 mm long tray	406×231×52 mm
5	561958301 For general instruments/two fixations/480 mm long tray	406×231×52 mm
6	561958401 For bayonet-shaped instruments/two fixations/480 mm long tray	406×231×52 mm



5

Media

- Water pre-treatment
- Water softener
- Detergent management

The lifetime of sterilization and disinfection equipment, as well as the general hygiene of your facility, can be greatly affected by the quality of the water you use. Getinge offers a selection of highly effective and cost-efficient water purifiers, filters and softeners to help you solve such water problems.

To assure the right products for your application, contact your Getinge representative.



Getinge WPT

Getinge WPT makes it easier with modern technology to ensure ultra-pure water of suitable quality throughout the instrument reprocessing workflow. This helps maintaining the lifespan of your surgical instruments, sterilizers and washer-disinfectors while maximizing your throughput and efficient production.

Getinge WPT guarantees clean water of the right quality for the entire cleaning process with washer-disinfectors and sterilizers. Its compact size makes it easy to install. Since it is factory pre-tested and designed for plug-and-play, you easily connect Getinge WPT to your municipal tap water.

Getinge WPT is based on Reverse Osmosis state-of-the-art technology, with pre-treatment based on carbon, microfiltration, UV-light and hardness stabilizer techniques. The unit is equipped with a 7" LCD touchscreen that makes it easy for the user to monitor and operate the process and cycle phases. All in all, Getinge WPT protects your equipment investments and gives the user extra assurance for the end result: Patient safety.

- **Small footprint.** A freestanding cabinet with a built-in system and no visible tubing or instruments. Getinge WPT takes up less floor space compared to WPT-systems.
- **Protects your investments.** Maintains life span for your sterilizers and washer-disinfectors as well as for your endoscopy units. Reduces the risk for pitting and other damage on the instruments you reprocess.
- **Plug-and-play.** Pre-tested with preinstalled components, integrated buffer tank and distribution pump. No time-consuming installation. Just plug-and-play.
- **Two models available.** To accommodate various needs and different types of municipal waters, Getinge WPT is available in two standard models.
- **Complies to branch standards.** Getinge WPT meets both NE/IEC 61010-1:2010 and EN 61000-6-3:2007+A1-EMC.
- **Always connected** Managed from a 7" LCD color touchscreen, Getinge WPT has a dedicated control system that keeps you connected to the present status and all water treatment functions. Parameters controlled and monitored include conductivity values of incoming and distribution water, flows, tank level, status of filters, level of salt and more. Every data recorded is logged and can be copied to an external USB stick.
- **Easy to service** All parts are easy to reach and change when service is required.
- **Many different uses** Getinge WPT is used to produce water to washer-disinfectors, sterilizers and endoscopy units.

Art. No.	Description	Capacity	Nominal rejection	External size (W×D×H)
6003000037	Getinge WPT 150	150 l/h	>98 %	1,000×600×1,800 mm
6003000038	Getinge WPT 150 (EDI)	150 l/h	>99,9 %	1,000×600×1,800 mm
6003000039	Getinge WPT 500	500 l/h	>98 %	1,000×600×1,800 mm
6003000040	Getinge WPT 500 (EDI)	500 l/h	>99,9 %	1,000×600×1,800 mm



Water softener

Compact, fully automatic, high-grade water softener for free-standing installation, with built-in salt container. The water softener is made entirely of composite material with an attractive external surface. The polystyrene type ion-exchanger is flushed and regenerated automatically. 10 kg salt tablets included in delivery.

Art. No.	Capacity	m3/regeneration at 1°dH	Salt contents	Size (W×D×H)
561963601	25-40 l/min	42-52	50 kg	260×410×1,050 mm
Art. No.	Description			
6003000218	Salt tablets 10 kg			



Getinge Ultrafilter 450

Wall mounted ultrafilter for removal of particles, bacteria and viruses from the incoming water to the endoscope reprocessors ED-FLOW, ED-FLOW SD and ED 900.

Getinge Ultrafilter is designed for a long lifetime with integrated cleaning functionality and has the capacity to serve 1-3 ED 900 or 1 ED-FLOW.

Art. No.	Description	Capacity, normal	Water connection	External size (W×D×H)
6003000215	Getinge Ultrafilter 450	41 l/min	½"	354×170×892 mm
6003000216	Getinge UF Cartridge 450			



CSD DoseTech detergent management system

CSD DoseTech is a simple, easy-to-use dosing system that delivers precise amounts of detergent into the sink, eliminating the variability of bottle-mounted pumps.

The CSD DoseTech detergent management system is a dispensing system used to transfer precise amounts of presoak chemicals into a pre-wash sink. This chemical dosing system uses an electronically controlled peristaltic pump to dispense detergent. Multiple dosing levels can be programmed to meet specific soil conditions for full and half sink levels providing optimal cleaning results prior to automated decontamination steps. The system is comprised of main control/pump unit, water temperature monitor, chemical supply line with weight and filter, chemical discharge line with check valve and attaching hardware. System is not for use in potentially explosive environments.

Art. No.	Description	Dimensions
6003001000	CSD DoseTech, with Flow meter, USB Port, Temperature Sensor, and power supply adapters for North America, North Asia, Europe, UK, China and Australia	
6003001012	Foot Pedal Control Unit	
6003001013	Low Level Sensor	280 mm (11 inches)
6003001014	Low Level Sensor	355 mm (14 inches)
6003001375	Sink top mounting kit	

Table of contents

Accessories.....	10, 15
Adjustable chair	17
Angled support for STU basket	30
Attachment for hook trolley and hook rails	23
Attachments for hook trolley	22
Basket divider.....	33
Basket for medical equipment rails	30
Basket rack.....	37
Baskets	23, 31-33, 42, 44
Beakers	6
Blue polymer storage bin	29
Cleaning Kit.....	11
Cutting device	16
Detergent management system	49
Damage protection clip for the sterile goods basket	34
Dispenser for Sterile baskets.....	35
Elmasonics	6-10
Glove dispenser.....	25
Green polymer storage bin.....	29
Holder for laundry/waste bags	25
Holder for two beakers, incl. two rubber rings	6
Hook system.....	18-31
Identification tag	44
Inspection lamps 3, 5 and 8 diopter	17
Instrument fixation system	45
Linen inspection & folding table	15
Lids.....	6, 42
Noise protection cover.....	6, 10
Packaging table.....	13
Packing Stations	13-14
Paper holders	24, 27
Protective covers.....	39
Rack for disposable covers	39
Rinsing Gun	11
Separating grid for shelf baskets.....	31
Shelves.....	21, 26-30, 37
Shoe rack	23
Tape dispenser	16
Trays.....	43-44
Trolley washer	11
Trolleys.....	16, 18-20, 35, 38, 40
Ultrafilter 450	48
Universal shelf with support	28
Water softener	48
Wire basket divider.....	34
Wire container.....	30
Wire holders	23-27
Writing desk	28
WPT	47



This document is intended to provide information to an international audience outside of the US.

This information is aimed exclusively at healthcare professionals or other professional audiences and are for informational purposes only, is not exhaustive and therefore should not be relied upon as a replacement of the Instructions for Use, service manual or medical advice. Getinge shall bear no responsibility or liability for any action or omission of any party based upon this material, and reliance is solely at the user's risk.

Any therapy, solution or product mentioned might not be available or allowed in your country. Information may not be copied or used, in whole or in part, without written permission by Getinge.

The products presented may be pending regulatory approvals to be marketed in your country.
Contact your Getinge representative for more information.

Distributors:

Getinge Disinfection AB • Ljungadalsgatan 11 • 352 46 Växjö • Sweden • +46 10 335 06 00 • info@getinge.com

Getinge IC Production Poland Sp. z o.o. • Szkolna 30 • 62-064 Plewiska • Poland • +48 61 630 99 01 • info@getinge.com

Getinge AB • PO Box 8861 • 402 72 Gothenburg • Sweden • +46 10 335 00 00 • info@getinge.com

© 2024 Getinge | Getinge and **GETINGE** * are trademarks or registered trademarks of Getinge AB, its subsidiaries or affiliates. |
DMS-0001964-rev5 | All rights reserved.

www.getinge.com