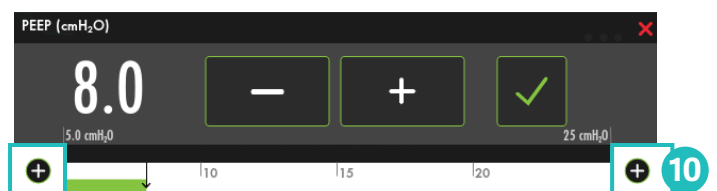
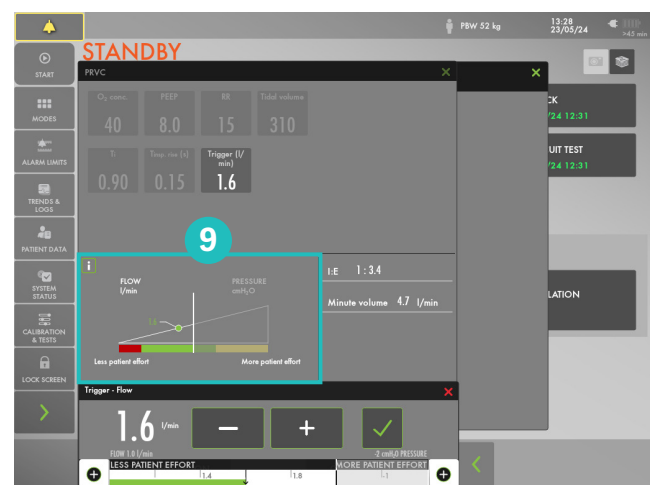
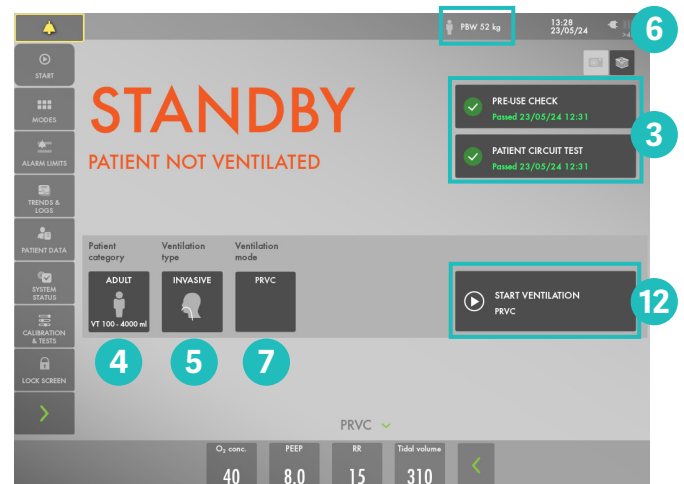


# Servo-u

## – short guide

### Setting up

1. Plug in the power cord and connect air and oxygen hoses.
2. Open the hatch on the side and switch the ventilator on.
3. Start the **Pre-use check (PUC)**. Follow on-screen instructions. The Patient circuit test (PCT) can be skipped during PUC and done separately and redone when the circuit/accessories has been changed. The PCT must be performed with a complete patient circuit, including all accessories (e.g humidifier chamber filled with water, filter and nebulizer).
4. Choose **Patient category**: adult, pediatric or neonatal (optional).
5. Choose **Ventilation type**: invasive or non invasive.
6. Calculate Predicted Body Weight (PBW) automatically by tapping **PBW** and enter patient gender and height. (For pediatric and neonatal patient category it is the patient's weight). Tidal Volume in ml/kg will now be monitored.
7. Tap **Ventilation modes**. Tap and hold the mode to get more information.
8. Choose mode and adjust the settings.
9. Some settings have dynamic images.
10. The safety scale can be expanded by tapping **+**.
11. Adjust alarm limits if necessary in the alarm window.
12. Tap **Start ventilation**.



Refer to user manual for detailed information.

## Alarm color depends on priority:

- **High priority**
- **Medium priority**
- **Low priority**



Alarm audio silenced – Active alarms can be silenced for two minutes.



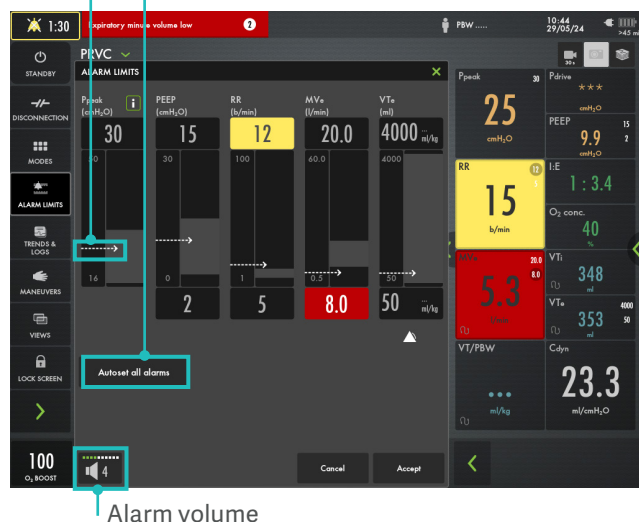
Pre-silence alarms – Most alarms are pre-silenced for 2 min.

Short cut - tap on the metric to adjust alarm limits directly.



Current measured value

Autoset Alarm limits in controlled modes



Alarm volume

Stop ventilation: tap **Standby** and tap and hold

## Disconnection

**Maneuvers:** Open Lung tool (option), Nebulization, Static Measurements, Manual Breath, O<sub>2</sub> boost level and Pes Catheter Positioning (option)

## Views



This document is intended to provide information to an international audience outside of the US.  
Manufacturer · Maquet Critical Care AB · Röntgenvägen 2 SE-171 54 Solna · Sweden · +46 (0)10 335 73 00

[www.getinge.com](http://www.getinge.com)

**GETINGE**