



Rotaflow II

Extracorporeal Life Support System

This document is intended to provide information to an international audience outside of the US.

GETINGE 



Proven strength. Reinvented.

Rotaflow is by your side

Critically ill patients need trusted extracorporeal support and the highest quality care. Hospitals need reliable and easy-to-use technology.

The Rotaflow II Centrifugal Pump System delivers everything you need, with a low total cost of ownership.

The Rotaflow II System is a reliable, high quality extracorporeal life support (ECLS) system that gives you the flexibility you need to provide quality patient care. As pioneers in the field of ECLS, Getinge is a leader in developing products and solutions in this area.

The Rotaflow II System can be used for both veno-arterial (VA) and veno-venous (VV) ECLS/ECMO. VA-ECMO supports both, the heart and lung in the case of cardiac and or respiratory failure, while VV-ECMO offers therapy to patients who have severe pulmonary insufficiency and cannot be supported using conventional

ventilation strategies. Both ECMO approaches can serve as a bridge to recovery or further treatment.

Rotaflow II not only comes in a completely new housing and with an enhanced and simplified user interface, but also offers many valuable features and improvements. And is still compatible with the proven PLS Set.





Support without compromise

A helping hand in critical situations

1 New design of the Rotaflow II System

Together with the Compact Holder, the Rotaflow II Drive and the primed PLS Set, the newly designed base unit weighs approx. 11 kg, which is significantly less than the previous models. This impacts ergonomics and makes transport within the hospital easier.

All elements that can or must be operated by the user are highlighted in yellow. Users can immediately see where they have to touch to be able to carry out a command.

2 Improved and simplified user interface

The user interface, with familiar elements, is easy-to-use and intuitive to operate. A simplified user interface is more user-friendly and can shorten the learning curve, leading to a more interactive and efficient use of the system.

Supporting features such as a step by step priming wizard guides (A) and assists during the setup of the device, the connection and priming of the PLS Set as well as a functional test, if required.

The advanced alarm management with supplementary information and guided assistance (B) supports you in better troubleshooting and patient management.

3 Redesigned Rotaflow II Drive

The hot-plug capability of the new Rotaflow Drive ensures immediate exchange during operation for gentle and continuous patient care. Color-coded parts and a new plug-in connection ease the operation and avoid confusion with old drive versions, the old Rotaflow Drive version is not compatible with Rotaflow II Base Unit.

4 Improved intra-hospital transport concept

The new concept attaches the Rotaflow II Drive and the PLS-i Oxygenator to a single compact holder. A predefined distance between the components creates a small footprint with an ergonomic and clearly arranged work area to improve staff and patient safety. All important components are under control with just one hand.

The Fixation Point allows flexible positioning of the Compact Holder close to the patient, resulting in shorter tubing and minimised contact with foreign surfaces. A clean and organised workplace reduces the risk of tripping or unintentional decannulation.

5 New battery management concept

Rotaflow II offers a more sustainable and consumption-based replacement of batteries by the customer. The concept enables the customer to calibrate the systems batteries, without Getinge intervention. The user interface provides a clear overview for monitoring the battery charge level and the health status of the battery. Both calibration and battery replacement can be handled in-house by trained hospital employees, cost-effectively and predictably for significantly reduced downtime.

6 Interfaces to external devices

Electrical interface for transmitting alarms to external systems, such as nurse call. Ethernet network connection and RS232 serial interface transmit application and device data to external systems.



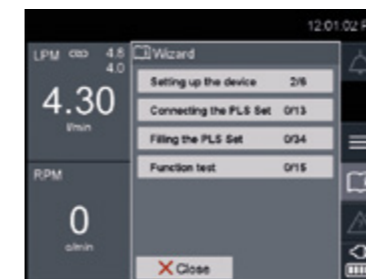
Compact Holder can be attached to the left or the right side of the Rotaflow II device handle or to the Fixation Point.



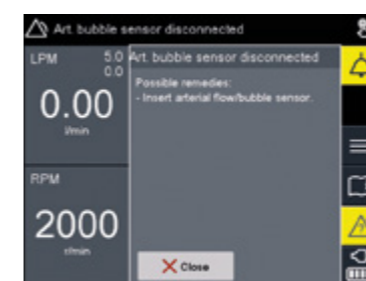
Fixation Point attaching the Compact Holder to a standard rail (vertical or horizontal) or a vertical round pole, such as on a mast.



Compact Holder with Fixation Point, Rotaflow II Drive and the PLS module combines the components in one ergonomic holder concept.



A



B

Compact set-up

Ease your daily work



Rotaflow II System

Low total cost of ownership

- Compact and intuitive holder concept for resource-saving intra-hospital transport as well as optimal integration into the workplace.
- The battery management concept allows calibration and replacement of the battery by the end user, giving the user full control over battery maintenance.
- Minimal number of preventive maintenance parts (e.g. battery), this ensures a cost-effective product life cycle.
- The lean manufacturing and service-oriented design minimises service times and optimises assembly processes for rapid replacement and maintenance of components.
- Simplified user interfaces for reduced training effort and handling of the device.
- The associated PLS Set stands for attractive price-performance ratio.



Permanent Life Support (PLS)

A therapy option for intensive care patients: The PLS Set is developed to support patients requiring respiratory and/or circulatory support with blood flows from 0.5 l/min to 7.0 l/min.

Rotaflow II with the PLS Set can be used in the intensive care unit, cardiac catheterisation laboratory as well as operating, trauma and emergency rooms.



Focus on sustainability

Improving battery life and reducing waste is a sustainability goal. The integrated smart battery management is one step to extended replacement intervals.

Carbon emission over the entire life cycle of the system is another goal. Independent calibration and changing of the battery by the hospital increases efficiency and reduces the need for travel.



With a firm belief that every person and community should have access to the best possible care, Getinge provides hospitals and life science institutions with products and solutions aiming to improve clinical results and optimise workflows. The offering includes products and solutions for intensive care, cardiovascular procedures, operating rooms, sterile reprocessing and life science. Getinge employs over 11,000 people worldwide and the products are sold in more than 130 countries.

© 2024 Getinge Australia Pty Ltd ABN 67 009 673 518

Australian Phone: 1800 438 464 Email: sales.au@getinge.com

New Zealand Phone: 0800 1 438 464 Email: sales.nz@getinge.com

www.getinge.com/anz

ANZ_ACT_V1_056_0524
EXP 05/27