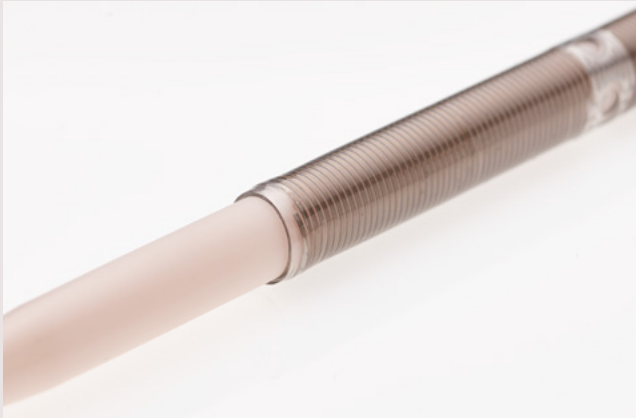


# HLS Cannulae

Solutions from tip-to-tip

Smooth transition between introducer and cannula tip



Stop ring defines maximum insertion depth



# HLS Cannulae

## Trusted vessel access

The HLS Cannulae are indicated for cannulation of all suitable vessels (e.g. femoral vessels) and can be inserted percutaneously, using the Seldinger technique, or under visual control into the previously exposed vessel.

An excellent flow performance, a wide range of cannulae sizes and different coating options make it one of the most popular peripheral cannulae – the perfect choice for vessel access during extracorporeal circulation.

### Performance characteristics:

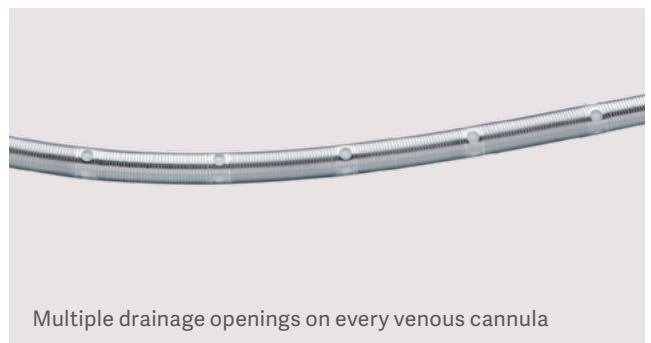
- Thin cannula walls support an excellent pressure/flow performance
- Reinforced side holes help reduce the risk of kinking
- Versions with Bioline Coating for duration of use of up to 30 days\*

### Safety features:

- Locking mechanism keeps introducer in position during insertion
- Smooth transition from introducer to cannula to support a safe cannula insertion
- Depth marks to control insertion depth, a stop ring to define maximum insertion depth
- Selectively hardened proximal cannula body, reduces the risk of kinking after insertion

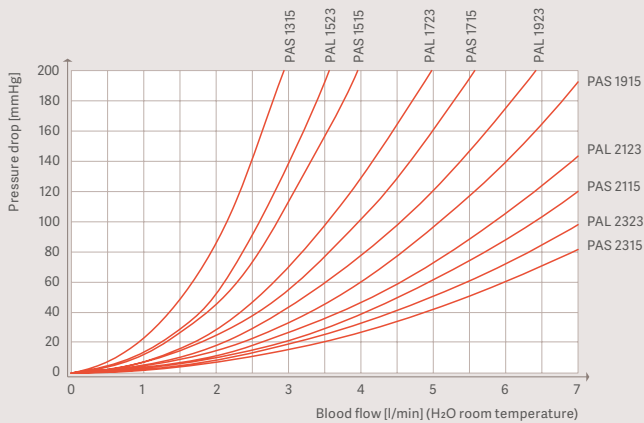


A pair of side holes on every arterial tip

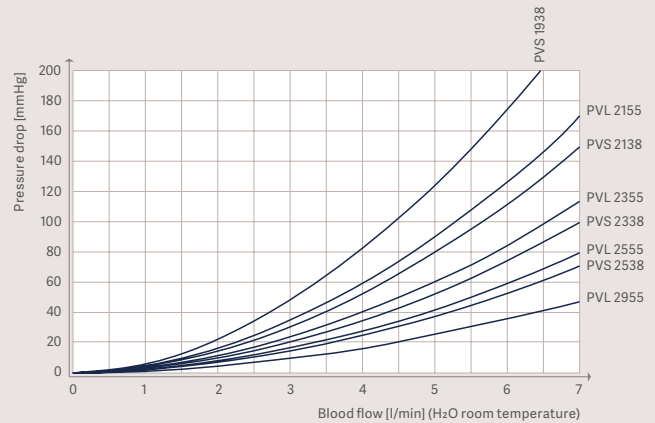


Multiple drainage openings on every venous cannula

### Pressure drop for all arterial HLS Cannulae 3/8"



### Pressure drop for all venous HLS Cannulae 3/8"



## Product order details arterial HLS cannulae

Type	Outer diameter	Insertion length	Side holes	Perforation length	Connector	Bioline Coating
PAS 1315	13 Fr (4.3 mm)	15 cm	2	1 cm	3/8" LL	BE-PAS 1315
PAS 1515	15 Fr (5.0 mm)	15 cm	2	1 cm	3/8" LL	BE-PAS 1515
PAS 1715	17 Fr (5.7 mm)	15 cm	2	1 cm	3/8" LL	BE-PAS 1715
PAS 1915	19 Fr (6.3 mm)	15 cm	2	1 cm	3/8" LL	BE-PAS 1915
PAS 2115	21 Fr (7.0 mm)	15 cm	2	1 cm	3/8" LL	BE-PAS 2115
PAS 2315	23 Fr (7.7 mm)	15 cm	2	1 cm	3/8" LL	BE-PAS 2315
PAL 1523	15 Fr (5.0 mm)	23 cm	2	1 cm	3/8" LL	BE-PAL 1523
PAL 1723	17 Fr (5.7 mm)	23 cm	2	1 cm	3/8" LL	BE-PAL 1723
PAL 1923	19 Fr (6.3 mm)	23 cm	2	1 cm	3/8" LL	BE-PAL 1923
PAL 2123	21 Fr (7.0 mm)	23 cm	2	1 cm	3/8" LL	BE-PAL 2123
PAL 2323	23 Fr (7.7 mm)	23 cm	2	1 cm	3/8" LL	BE-PAL 2323

One cannula per carton

## Product order details venous HLS cannulae

Type	Outer diameter	Insertion length	Side holes	Perforation length	Connector	Bioline Coating
PVS 1938	19 Fr (6.3 mm)	38 cm	12	10 cm	3/8"	BE-PVS 1938
PVS 2138	21 Fr (7.0 mm)	38 cm	12	10 cm	3/8"	BE-PVS 2138
PVS 2338	23 Fr (7.7 mm)	38 cm	16	10 cm	3/8"	BE-PVS 2338
PVS 2538	25 Fr (8.3 mm)	38 cm	20	10 cm	3/8"	BE-PVS 2538
PVL 2155	21 Fr (7.0 mm)	55 cm	20	20 cm	3/8"	BE-PVL 2155
PVL 2355	23 Fr (7.7 mm)	55 cm	20	20 cm	3/8"	BE-PVL 2355
PVL 2555	25 Fr (8.3 mm)	55 cm	24	20 cm	3/8"	BE-PVL 2555
PVL 2955	29 Fr (9.7 mm)	55 cm	32	20 cm	3/8"	BE-PVL 2955

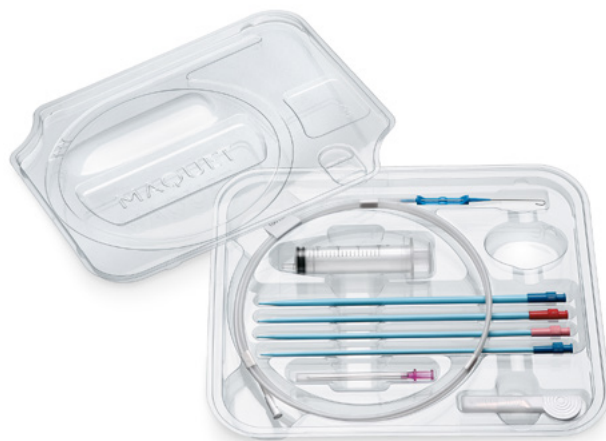
One cannula per carton

# Percutaneous Insertion Kit

Kit to prepare for arterial or venous peripheral cannulation of vessels for extracorporeal circulation.

## The kit includes:

- 4 vessel dilators: 10/12 Fr., 12/14 Fr., 14/16 Fr., 16/18 Fr.
- PIK 100: guide wire for arterial cannulae  
0.038" (0.097 cm) x 100 cm, J-tip
- PIK 150: guide wire for venous cannulae  
0.038" (0.097 cm) x 150 cm, J-tip
- Guidewire advancer
- 18 Ga (1.27 mm) puncture needle
- Mini scalpel
- 10 ml (10 cc) syringe
- Additional dilator sizes and guidewires available



## Order details percutaneous insertion kits and cannulae accessories

Article No.	Guide wire length	Description
PIK 100*	100 cm	Percutaneous insertion kit for arterial HLS cannulae
PIK 150*	150 cm	Percutaneous insertion kit for venous HLS cannulae
PIK dilator set L**		Cannulae accessories: 3 multi-step dilators, dilator sizes 18/20 Fr., 20/22 Fr., 22/24 Fr.
PIK dilator S**		Cannulae accessories: 1 multi-step dilator, dilator size 08/10 Fr.
PIK guidewire 100**	100 cm	Cannulae accessories: separate guidewires for arterial cannulae
PIK guidewire 150**	150 cm	Cannulae accessories: separate guidewires for venous cannulae

\* One kit per carton, sterile packed

\*\* 5 pcs. per carton, sterile packed

### Note

All information presented in this brochure is either referenced by the below publications or is on file at Getinge.  
HLS Cannulae Set- Instructions for Use · 70104.8192 · G-139 · Version 05 · NONUS · 2021-04  
Percutaneous Insertion Kit- Instructions for Use · 70104.8194 · G-137 · Version 06 · GLOBAL · 2020-06

This document is intended to provide information to an international audience outside of the US. The products in this brochure may be pending regulatory approvals to be marketed in your country. Contact your Getinge representative for more information. Refer to Instructions for Use for current indications, warnings, contraindications and precautions.

The following are registered trademarks or pending trademarks of Getinge AB, its subsidiaries or affiliates in the United States or other countries: Getinge, Maquet Cardiohelp, Avalon Elite, Bioline Coating, Softline Coating, Rotaflo.

Manufacturer · Maquet Cardiopulmonary GmbH · Kehler Str. 31 · 76437 Rastatt · Germany · +49 7222 932-0

[www.getinge.com](http://www.getinge.com)

**GETINGE** 