



# Getinge Automation System

Maximizing throughput for  
washer-disinfectors

This document is intended to provide information to an international audience outside of the US.

GETINGE 



# High-efficiency processing

– when time is critical

The Getinge Automation System can be customized to fit any configuration, from 3–10 washer-disinfectors. Our design experts can create an optimal solution for your CSSD, no matter how large or small.

The Getinge Automation System is a full range of loading and transport systems for wash carts used in washer-disinfectors. These carts can be staged and ready for immediate transfer to the washer-disinfector, with no delay between loads. The system is built on four integrated products:

- **Air Glide System (AGS) 2.0**, an automation system that provides maximum productivity and efficiency for CSSDs using multiple Getinge 86-series.
- **Free standing loading conveyor (FSLC)** automatically delivers the next wash cart to the next available washer-disinfector, minimizing delays to improve throughput.
- **Return conveyor**, which automatically returns emptied carts to the soiled side, minimizing operator strain.
- **Free standing unloading conveyor (FSUC)** automatically unloads wash carts after the cycle is complete, improving efficiency by freeing staff for other tasks.

# No more waiting

## Automatic loading and unloading conveyor ensures processing without delay

### How it works

Multiple washer-disinfectors (3–10) are aligned side by side. The number of washer-disinfectors depends on the size of your facility and your reprocessing needs.

As soon as one washer-disinfectors becomes available, the shuttle automatically picks up the next wash cart from the loading conveyor. The washer-disinfectors automatically selects the correct program, using a bar code mounted on the wash cart.

This way downtime between cycles is eliminated and the washer-disinfectors will be used to their full potential and thereby increase overall throughput.

### 1 Unobstructed access

The hanging shuttle frees the floor area in front of washers for easy cleaning and access. No moving parts inside the machine are used for loading / unloading.

### 2 Single infeed, no waiting

The system ensures a balanced workflow and efficient machine use by automatically delivering the next wash cart to the next available washer-disinfectors.

### 3 Easy to operate

The intuitive Centric touch panel ensures easy and efficient operation. Operators can view cycle process and guidance.

### 4 Built-in safety stop

The shuttle stops immediately upon contact with any obstruction – human or object.

### 5 Easy-to-clean rollers

Smooth action removable rollers are easy to clean, reducing the risk of cross-contamination.

### 6 Easier loading

A docking interface and automated electrical driven transfer rollers make it easy and ergonomic to load wash carts.

The Getinge Automation System maximizes throughput to improve the workflow in the CSSD. Simply stage multiple loads for hands-free processing, freeing staff for other tasks.



### Pull-out service frame\*

Saves space by allowing a compact and easy installation.



### Turntable conveyor\*

Automatically rotates the wash cart 90° giving great flexibility accommodating the needs of just about any building layout.



\*Optional

# Configured to fit your space

Customized to meet your needs

## The barrier system ensures proper hygiene

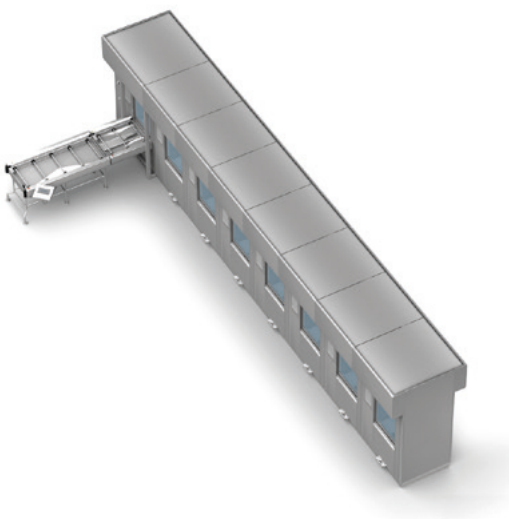
Each zone is separated by pass-through washer-disinfectors and return systems, creating a physical barrier. The barrier enables the ventilation to maintain and control the airflow between the two zones to reduce cross-contamination.

## Maximize productivity

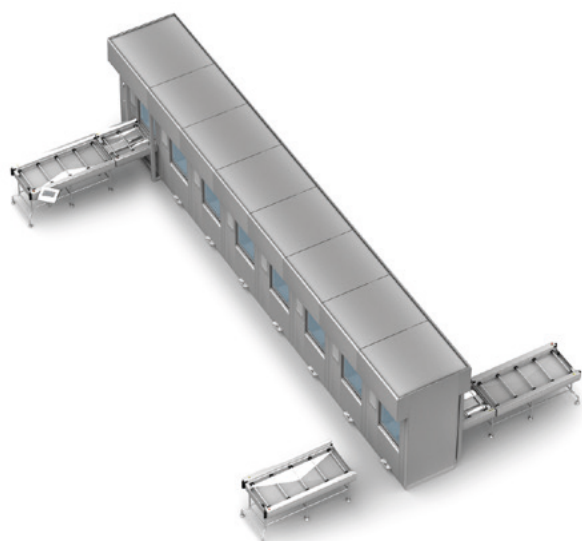
Avoid downtime with effective staging and automatic loading. Modular, automatic loading and unloading conveyors are ergonomically designed for easier handling of wash carts. The modular conveyors also serve as a wash cart staging area to maximize productivity and throughput.

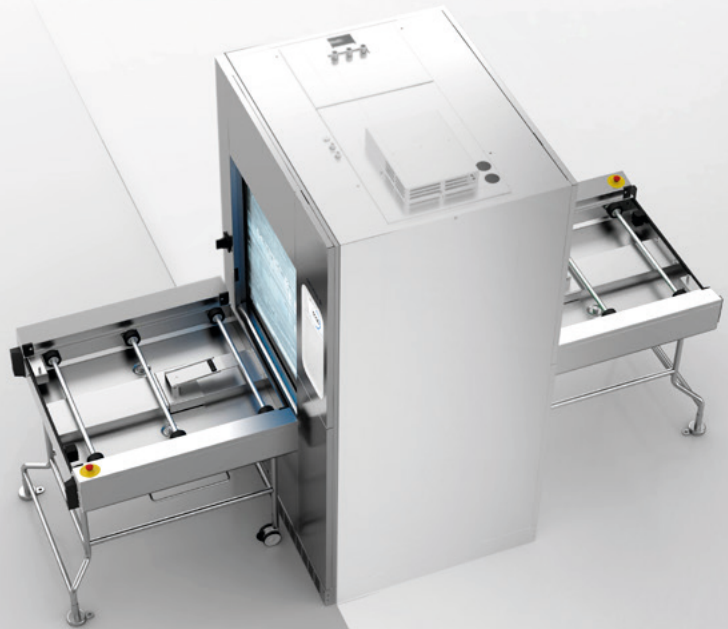
The conveyors can be equipped with fully automatic turntables either side, giving more flexibility for almost any building layout and extending options in small spaces. The turntable automatically rotates the wash cart 90°, then returns to receive the next cart.

### 1 Single sided automation



### 2 Multiple loading stations

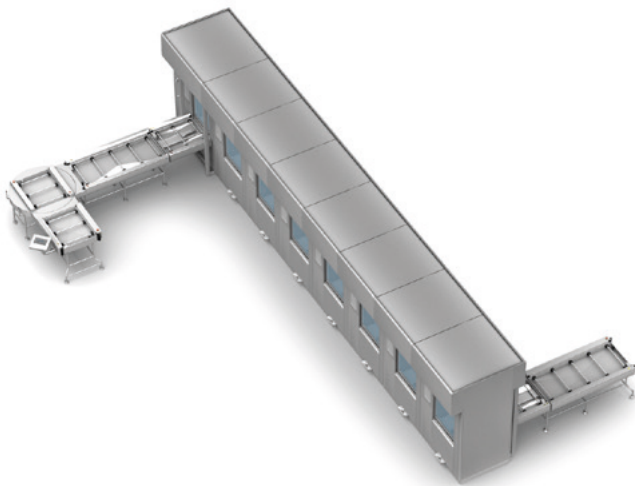




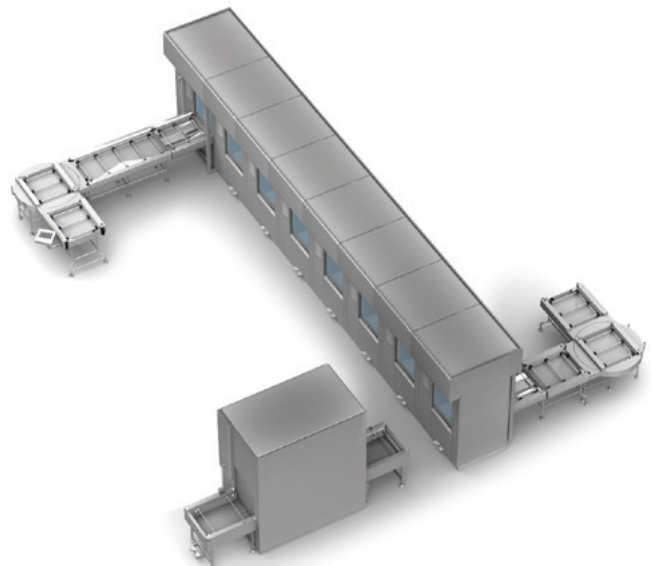
Getinge's automatic loading and unloading conveyors can be used to increase the efficiency of Getinge 86-series washer-disinfectors without implementing a large scale automation system.

Using automated loaders and/or unloaders with single, free-standing units demonstrates the full flexibility of the Getinge Automation offering in meeting the demands of all facility sizes; small to large.

### 3 Automation with turntable



### 4 Pre-cleaning station



# The intuitive Getinge Centric Interface

Clear information when you need it

## Clear information at a glance

With the Centric System, you immediately know the status of the load. A full system overview is displayed alongside individual washer-disinfector status. The AGS panel allows users and service technicians to easily adapt the system to sudden changes in the workflow.

## View from a distance

Large, high-resolution displays on each washer-disinfector are easy to read, allowing staff to monitor progress – even from a distance. This ensures safe and thorough operation, and improves productivity.

## Logical process steps

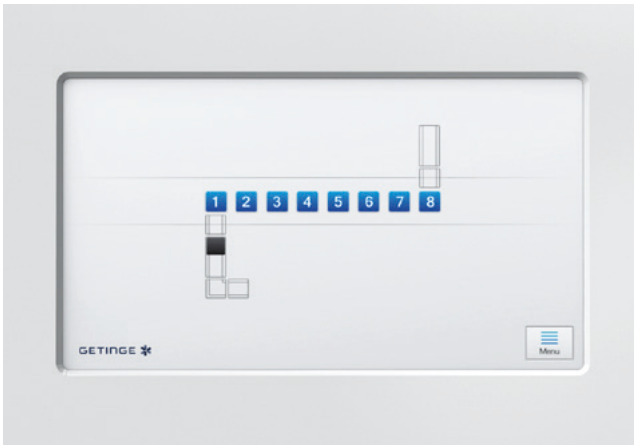
Process status and start-up choices are presented in a clear and logical manner. The intuitive design requires less training, and can be easily operated by staff at all experience levels.



Centric provides status at a glance: easy-to-see the time remaining, even from a distance.



Getinge's Centric Interface was developed with customers to deliver an innovative, unified user-friendly system. It's one of Getinge's many innovative, integrated solutions with a user-centric focus that improve processing efficiency.

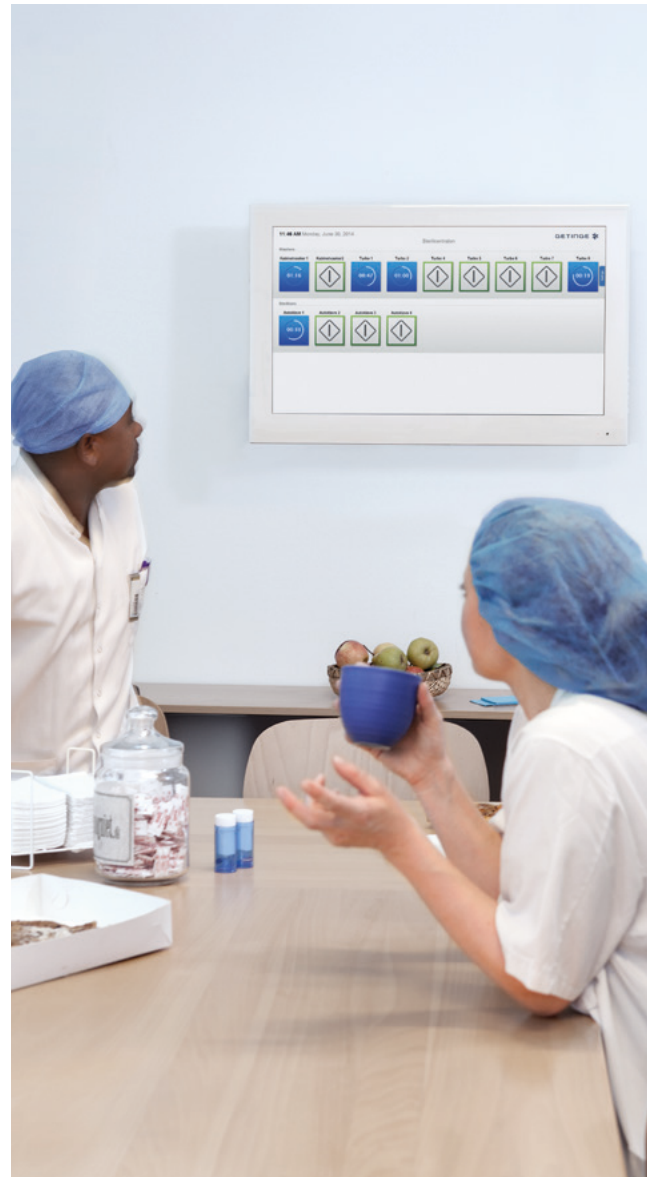


Centric also shows an interactive overview of the current status in real-time. The menu also allows for prioritizing a specific washer for service or fast track of instruments.

Centric also shows color-coded warnings as well as real-time and historical alarms.

### Monitoring board

The online monitoring screen enables viewing current equipment status, giving you full control of remaining process time, alarms and warnings – without even having to go to a computer or washer-disinfector.



# Customized to meet your needs

## Return system for wash carts



Return conveyor with automatic pass-through hatch



**Free standing pass-through hatch**  
Available in two sizes (large and small) for recessing in the barrier wall with a "window wall opening".



**Free standing pass-through hatch (large)**  
With accessory "wall frame" for recessing in the barrier wall with a "door wall opening".

The wall frame is equipped with Smart 2.0 docking interface for e.g. transferring 86-series wash carts.



**Free standing pass-through hatch (small)**  
In combination with a shelf for placement of items, instrument tray etc.

**Note**  
With the shelf accessory installed, the wall frame is not compatible with Smart 2.0 docking interface.



Return conveyor with automatic pass-through chamber



**Free standing pass-through chamber, clean side**  
Free standing pass-through chamber with interlock function to prevent both doors from being open at the same time. Designed to recess in the barrier wall with a "door wall opening".

The "wall frame" is always included and equipped with Smart 2.0 docking interface for e.g. transferring 86-series wash carts.



**Free standing pass-through chamber, unclean side**  
Equipped with Smart 2.0 docking interface for e.g. transferring 86-series wash carts.



With a firm belief that every person and community should have access to the best possible care, Getinge provides hospitals and life science institutions with products and solutions aiming to improve clinical results and optimize workflows. The offering includes products and solutions for intensive care, cardiovascular procedures, operating rooms, sterile reprocessing and life science. Getinge employs over 10,000 people worldwide and the products are sold in more than 135 countries.

This document is intended to provide information to an audience outside of the US.

**Getinge Infection Control AB** · PO Box 69 · SE-305 05 Getinge · Sweden · +46 10 335 00 00 · [info@getinge.com](mailto:info@getinge.com)

**[www.getinge.com](http://www.getinge.com)**